

# Competencies, Not Credits

Perspectives from Northern Arizona University



Sponsored by

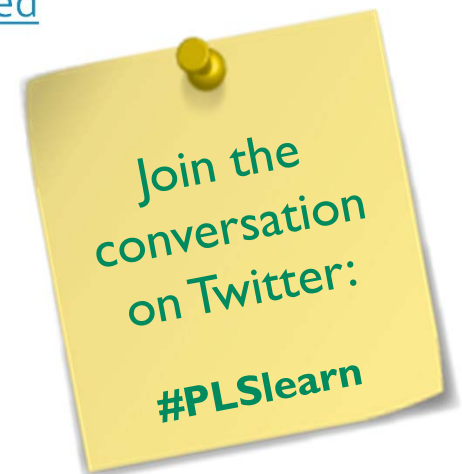
**PEARSON**

# Today's Speakers



## Dr. Corrine Gordon

Assistant Clinical Professor  
Personalized Learning  
Northern Arizona University  
Personalized Learning Website: [NAU.edu/personalized](http://NAU.edu/personalized)  
[Cori.Gordon@nau.edu](mailto:Cori.Gordon@nau.edu)

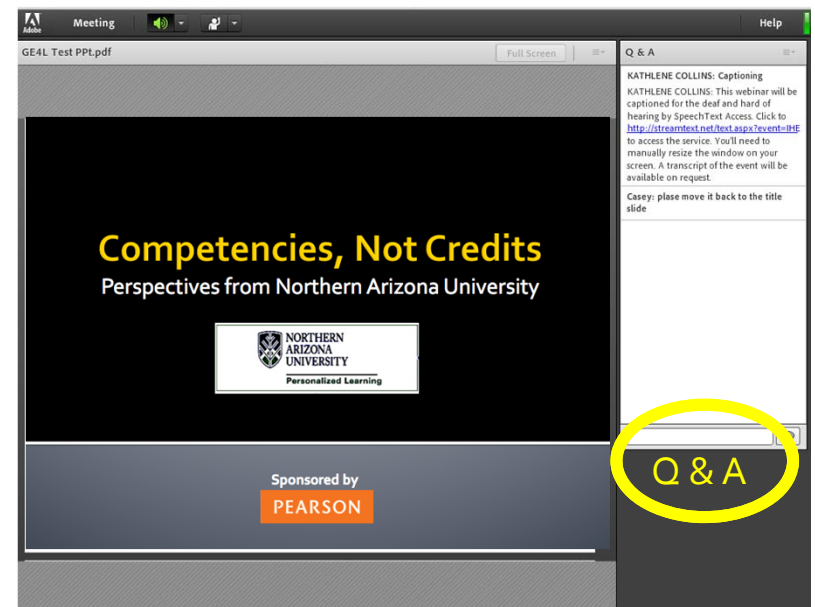


## Kenneth C. Green, *moderator*

Founding Director  
The Campus Computing Project  
& Digital Tweed blogger @ *Inside Higher Ed*  
<http://campuscomputing.net>

# Before We Begin

- We are using Adobe Connect. Please enter questions in the text field at the bottom of the Q&A Window. *We are monitoring the discussion and will try to bring the Q&A comments into the conversation.*
- We will not use the “raise your hand” feature.
- We are recording the webinar; the webinar archive and slides will be available later today.



# Audience Poll Question

Which of the following best describes your title?

- A. Institutional Leadership (President, VP, Chancellor)
- B. Program/College Leadership (Dean, Director)
- C. Departmental Leadership (Chairperson)
- D. Instructional Designer
- E. Faculty
- F. Other

# NAU's Personalized Learning

- Three majors
  - Computer Information Technology,
  - Small Business Administration,
  - Liberal Arts
- Online and self-paced
- \$2500 for 6-month subscription
- General education requirements constructed in a modular fashion to produce six distinct degree paths
- Highly structured student path from first contact to first lesson

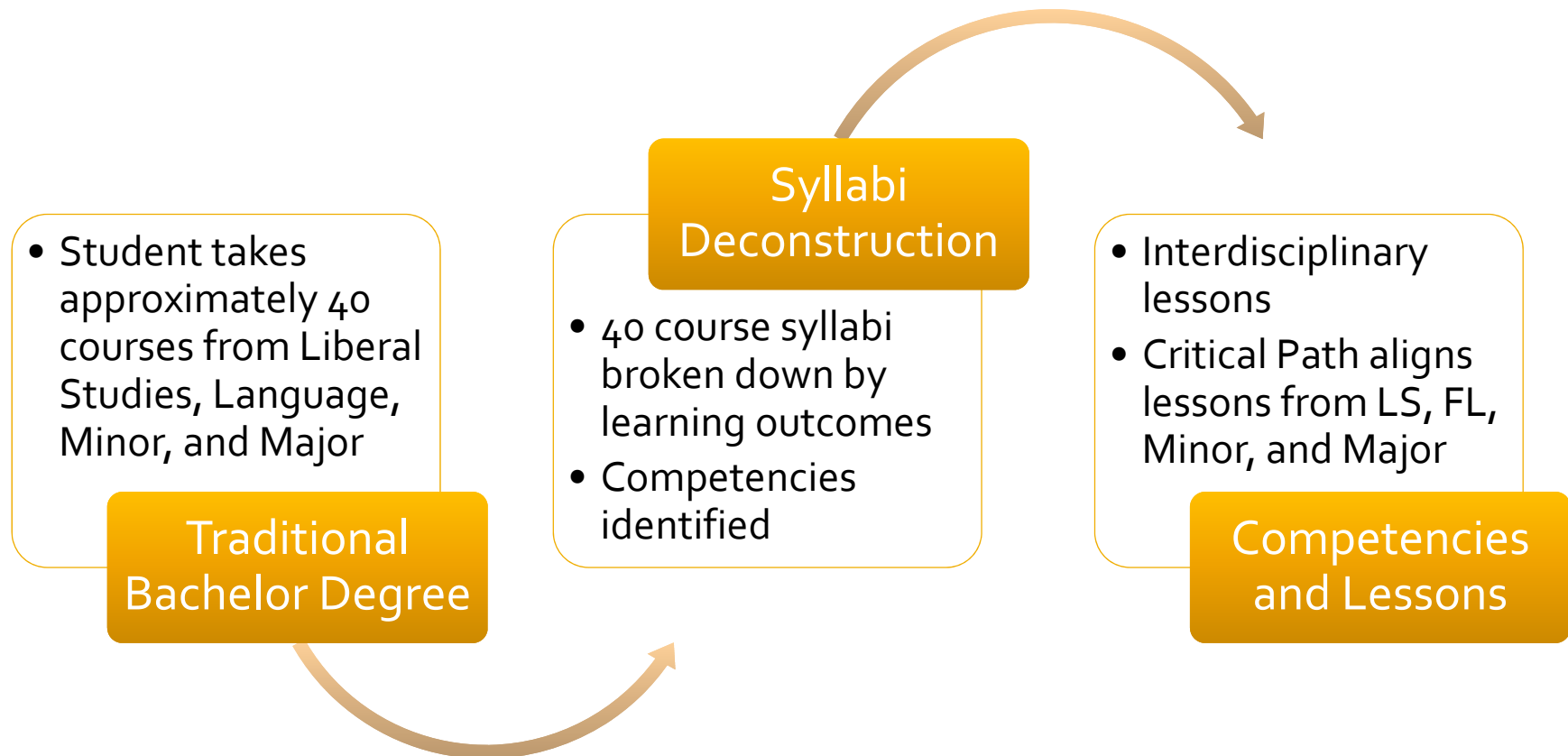


# Audience Poll Question

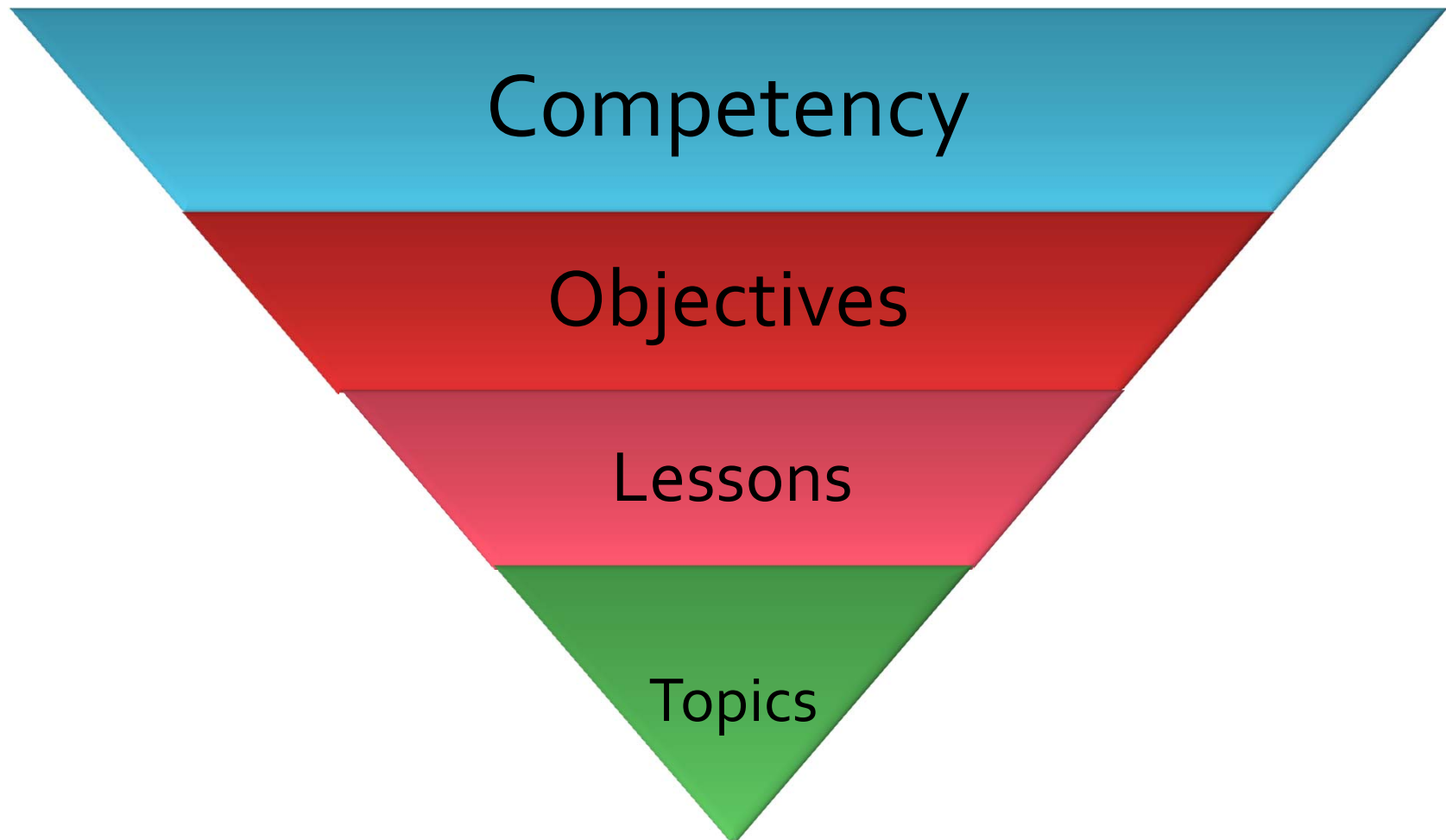
What is your level of familiarity with competency-based learning?

- A. None
- B. I've heard a little bit about it
- C. I've heard a lot about it
- D. I'm very familiar with it

# Moving from Credit to Competency

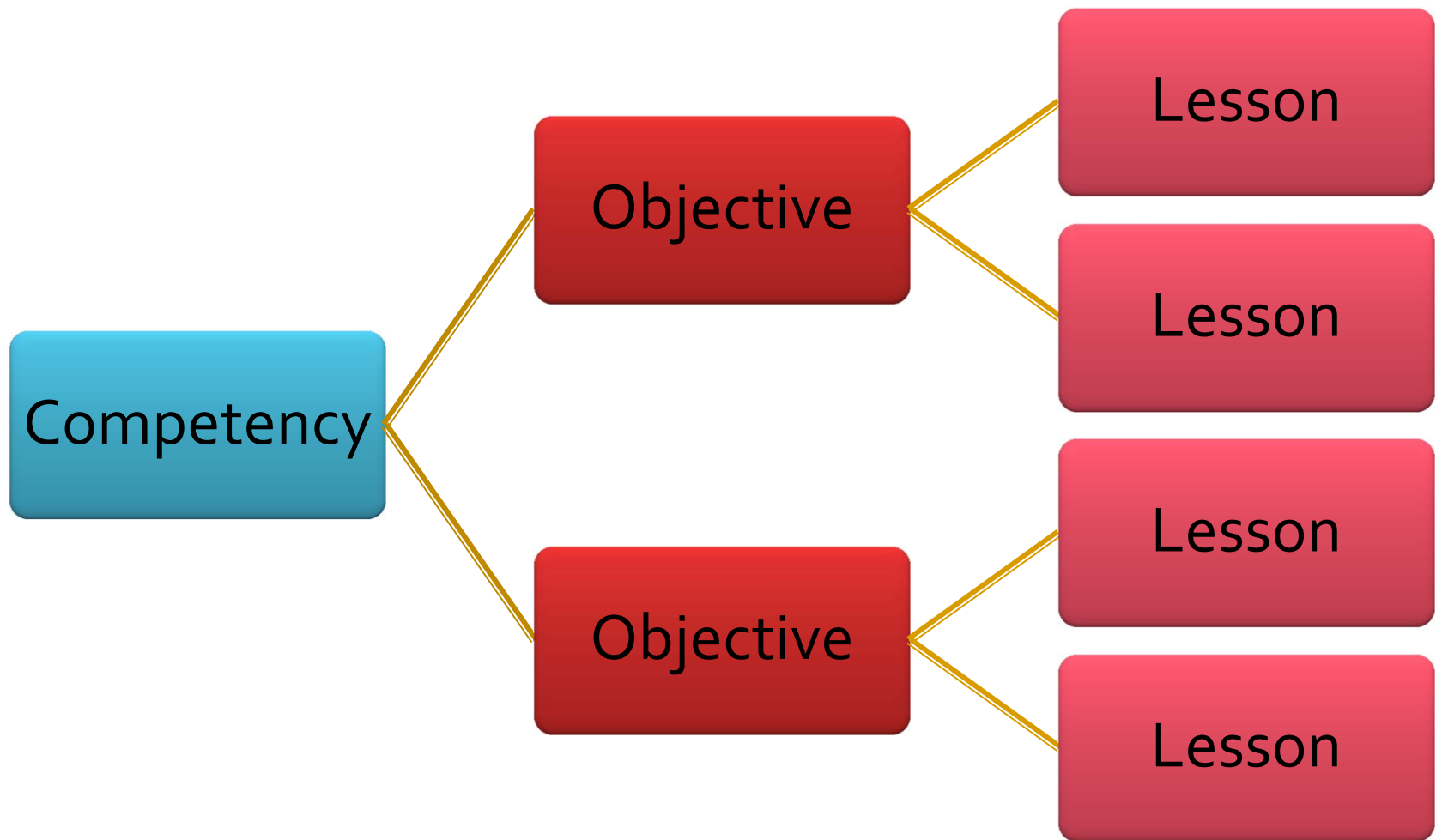


# PL's "COLT" Model

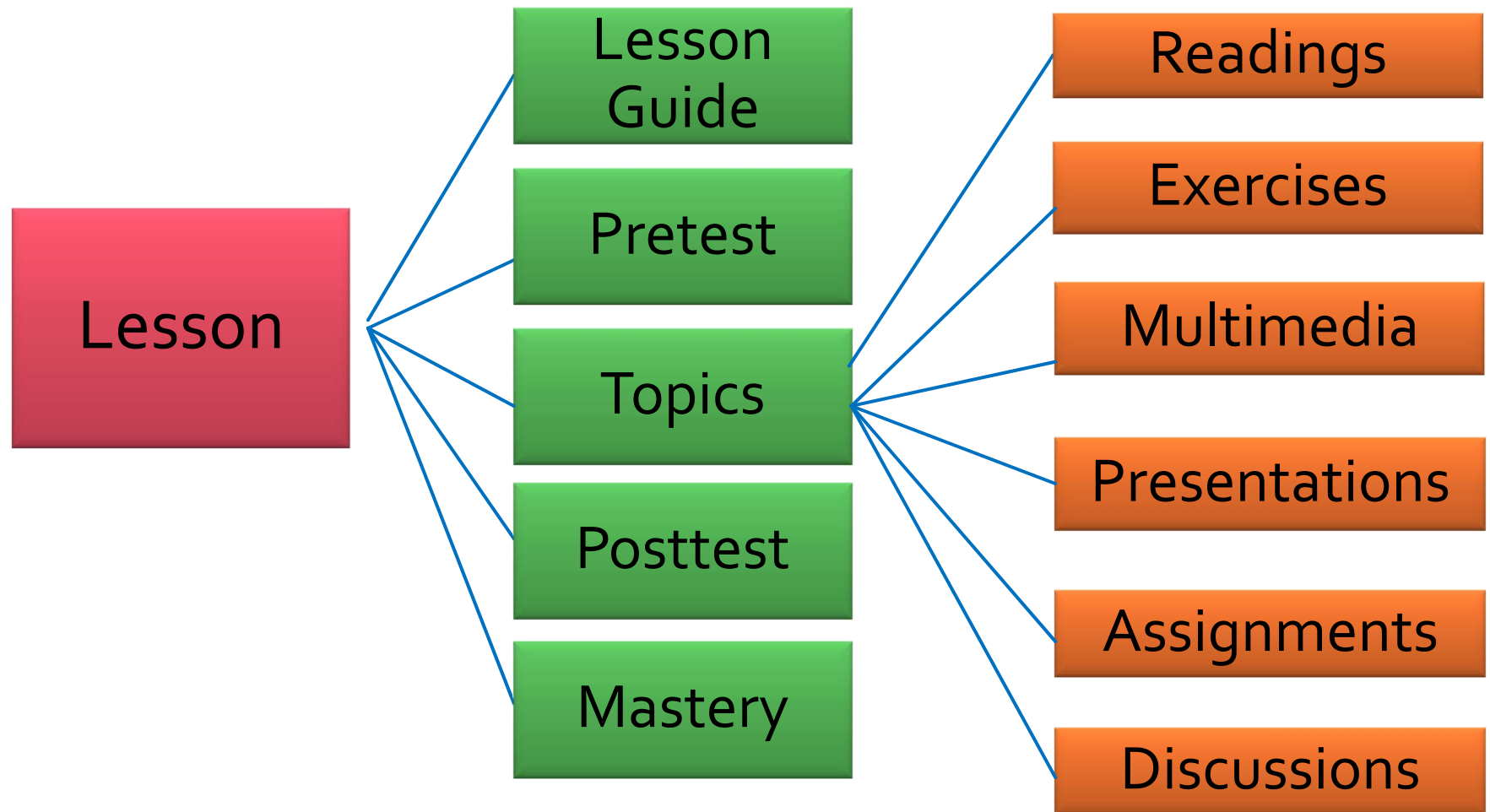




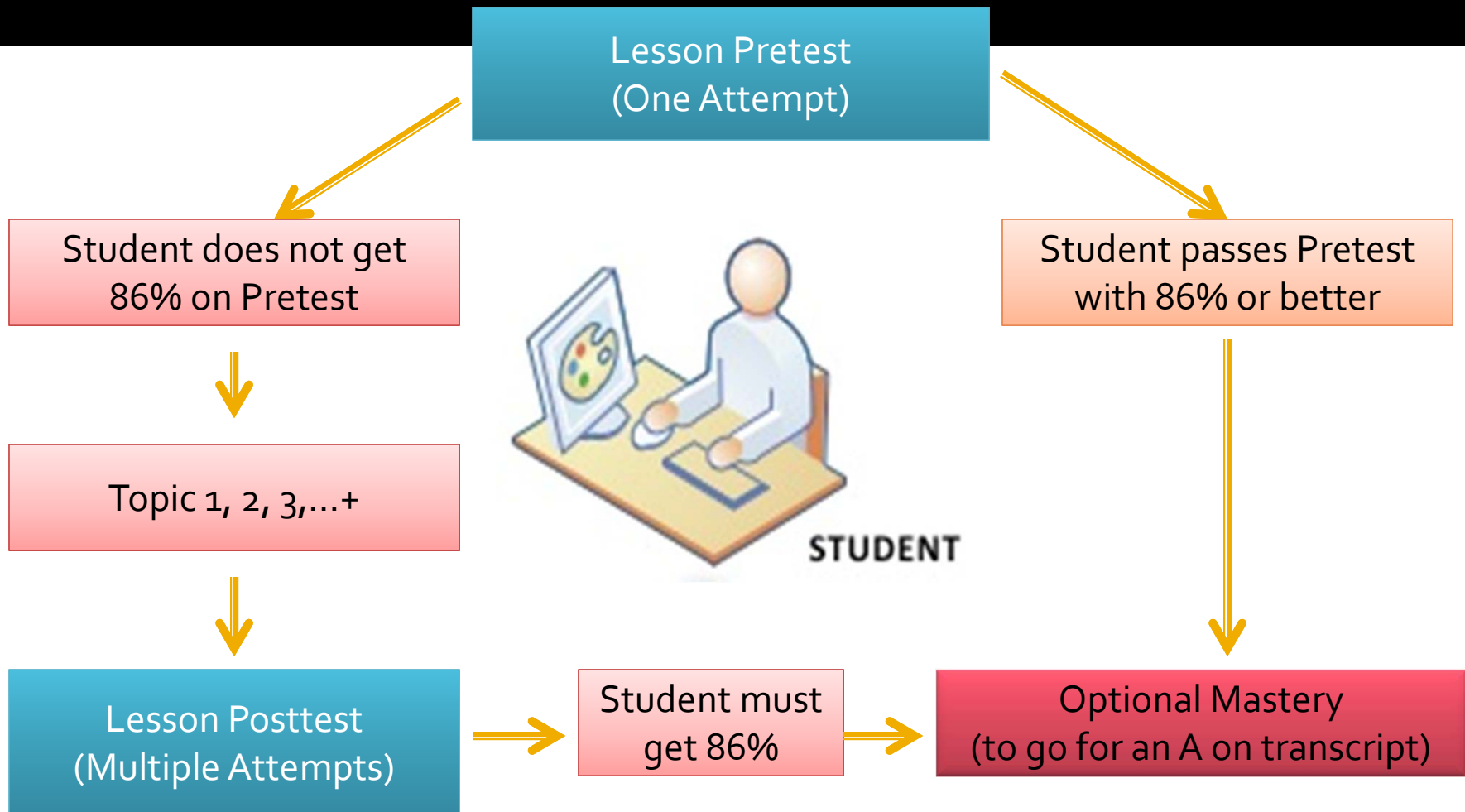
# PL's "COLT" Model



# PL's "COLT" Model



# Lesson Flow

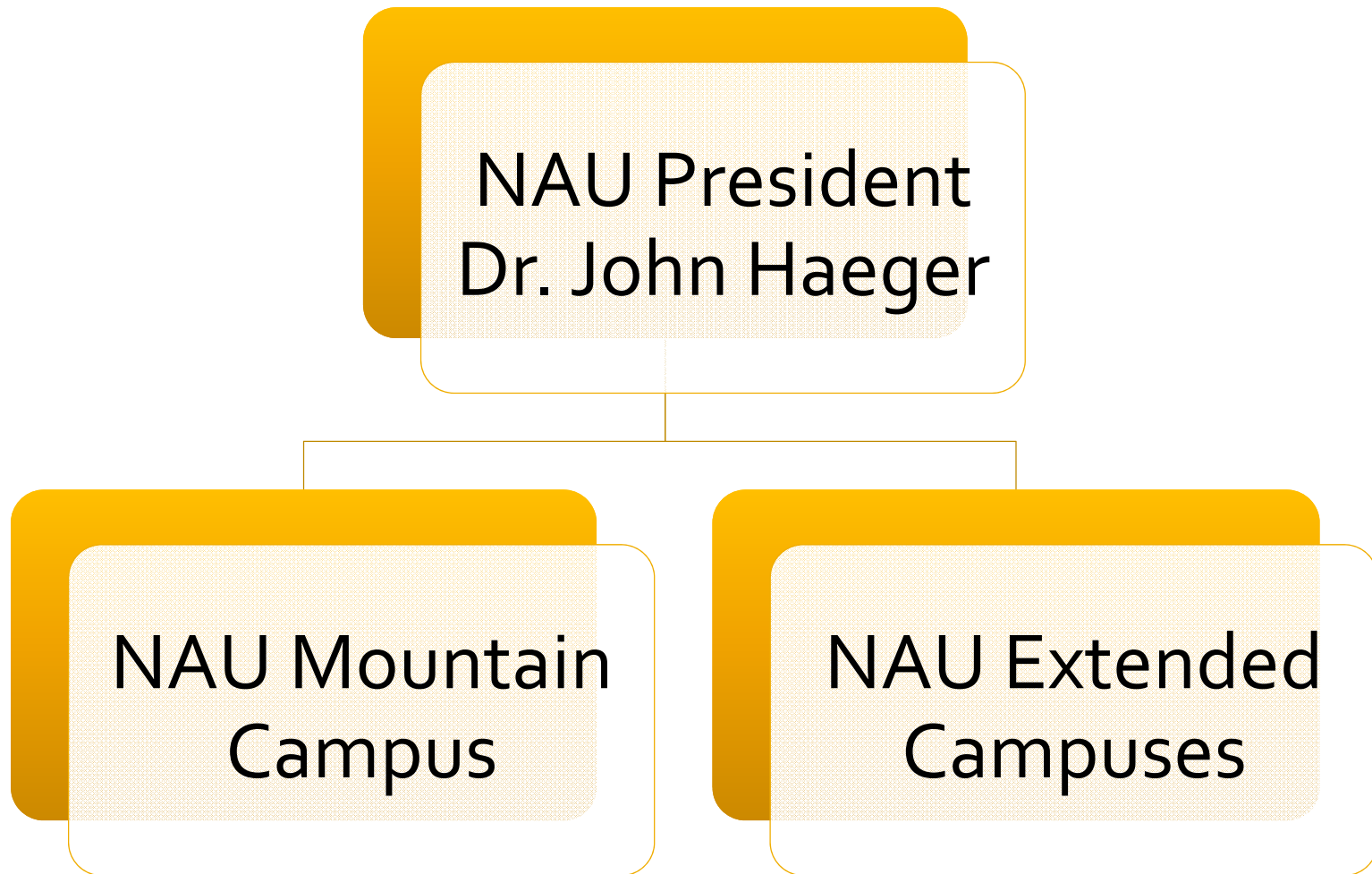


# Audience Poll Question

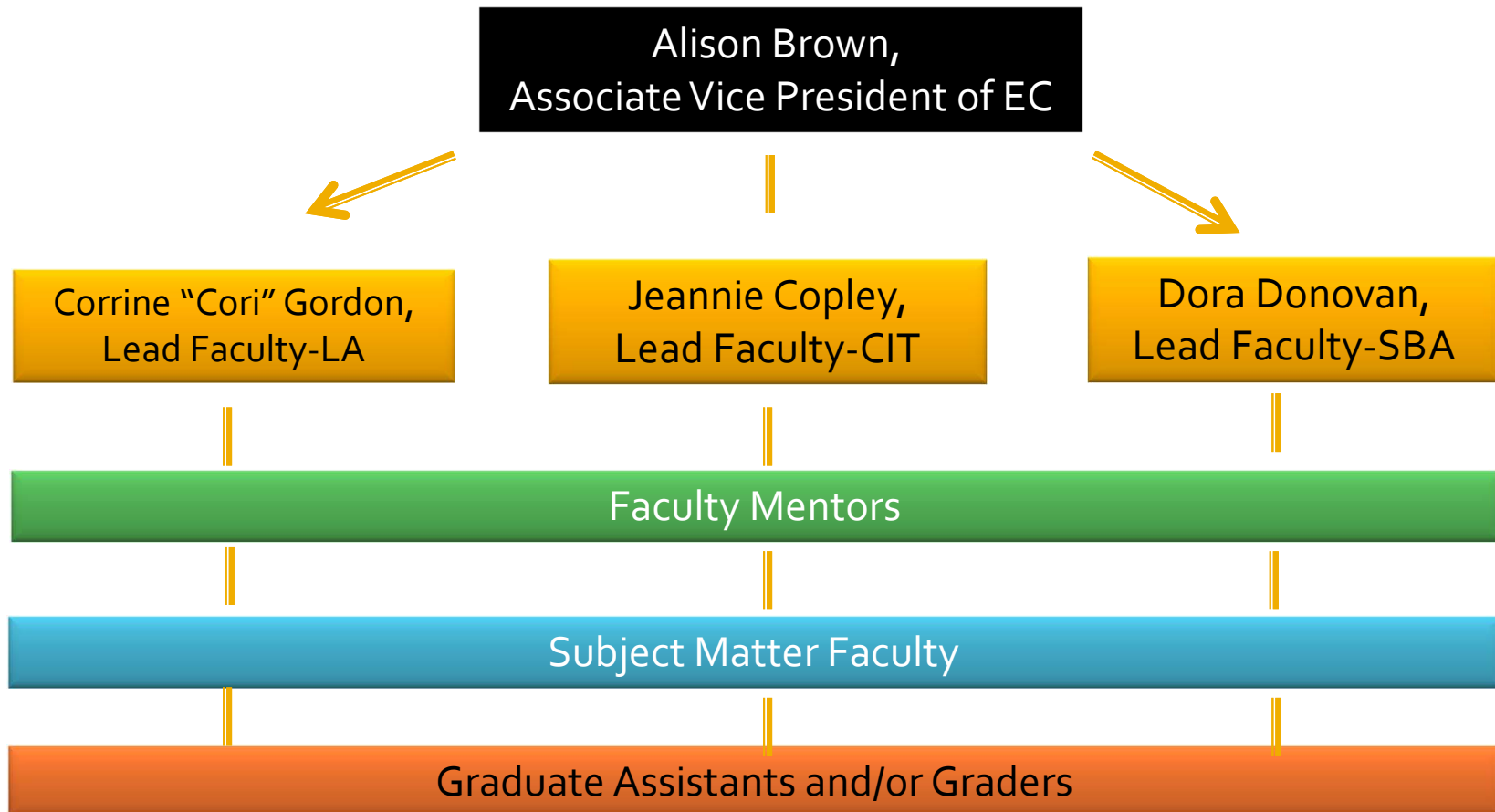
Do you think competency-driven assessment can demonstrate student learning?

- A. No
- B. It depends on the institution
- C. It depends on the program
- D. It depends on the assessment
- E. It depends on many variables
- F. Yes
- G. Not sure

# Mountain/Extended Campuses



# Personalized Learning Faculty Roles



# Analytics, Dashboard, and Use of Data to Support Learners



# Audience Poll Question

What is your level of familiarity with learning analytics?

- A. None
- B. I've heard a little bit about it
- C. I've heard a lot about it
- D. I'm very familiar with it

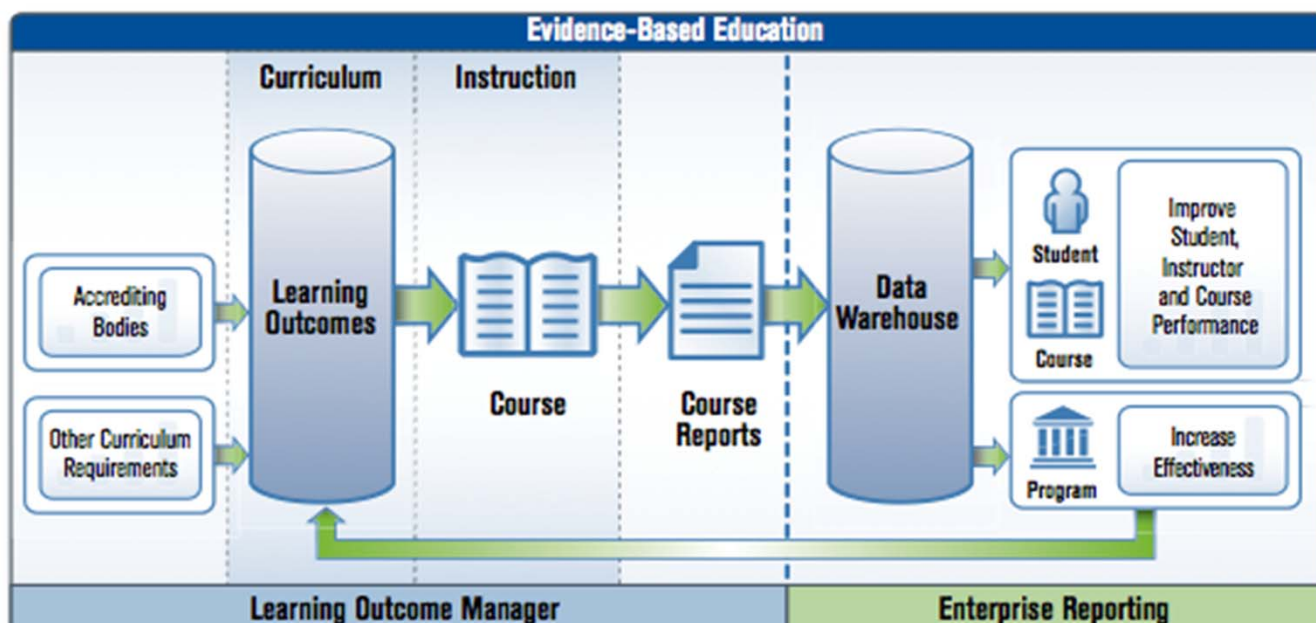


# Analytics: Learning Outcome Manager

## Building a Culture of Assessment

Learning Outcome Manager (LOM) helps educators build a culture of assessment by giving faculty and administrators a set of tools for writing and organizing learning statements (typically based on various professional or national accreditation standards), identifying the courses and programs that map to these statements, and creating and storing rubrics for scoring/grading assignments that are associated with these learning statements. All of these elements are stored in a central repository.


Learning Outcome Manager also has an in-course reporting functionality for analyzing and tracking student performance against learning statements. These reports and the central repository itself can be utilized during reaccreditation visits as solid evidence that your institution is improving courses and programs over time based on student performance.



# Personalized Learning Dashboard

Click an Area to the right to begin

**Units Earned**

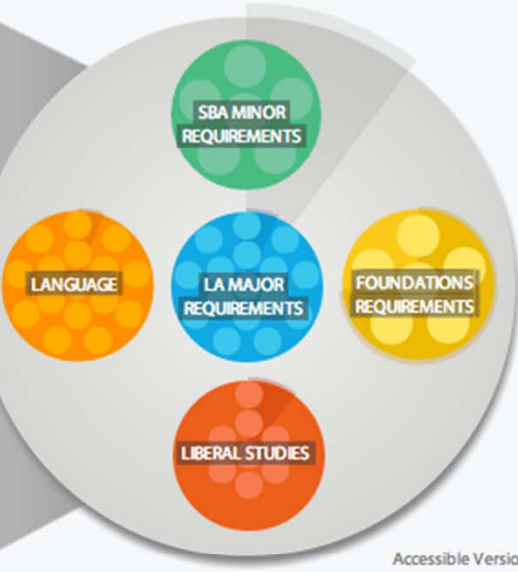


**Subscription Progress**

Your Subscription ends on 1/7/2014

**JAN 7**

You have 4.1 months remaining.



Accessible Version

**ADD LESSON**

**6.4**

ENROLLED UNITS

**Tutorials**

Student Orientation Tutorial

**Currently Enrolled Lessons**

These lessons are active or recently completed

👍 You have no To Do Items

**HOLDS**

👍 You have no Hold Items

**ANNOUNCEMENTS**

**Happy Fourth of July!**

Cori Gordon July 03, 2013

We at PL just want to wish you a happy Fourth of July! The office will be closed on the Fourth, and we will be back in on Friday, 7/5.

Have a safe holiday!

Welcome

Ali Dziedzinski May 28, 2013

Welcome to Personalize Learning's Student Orientation Tutorial (SOT)!

This SOT will show you how to... [read more](#)


**Corrine Gordon**

Mentor

📞 602/776-4655

✉️ [Cori.Gordon@nau.edu](mailto:Cori.Gordon@nau.edu)

Mon, Tue, Wed:  
9:00AM-10:00AM




# Descending into the Competency View

The screenshot displays a user interface for managing competencies. On the left, a sidebar titled "Competencies in this Area" contains a vertical list of competencies, each with a corresponding icon and a progress indicator. The competencies listed are:


- Team Structures**  
C1. Work in team structure
- Diverse Communications**  
C2. Communicate with diverse populations
- Solve Complex Problems**  
C3. Solve complex problems
- Analyze Complicated Materials**  
C4. Analyze complicated materials
- Write About Culture**  
C5. Write about culture effectively
- Academic Essays**


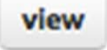
At the bottom of the sidebar, there are two status indicators: "COMPLETED" and "TRANSFERRED", both marked with a checkmark. To the right of the sidebar is a large, circular diagram composed of many smaller blue circles, some of which contain white dots. A small circular icon with an upward-pointing arrow is located above the diagram. The text "Accessible Version" is visible in the bottom right corner of the interface.

# Topic-Level View within Lesson

 Transcript Tracker


Lessons in this Competency



**Concepts Of Group Dynamics**


L1. Identify key concepts and theories in Group Dynamics

---

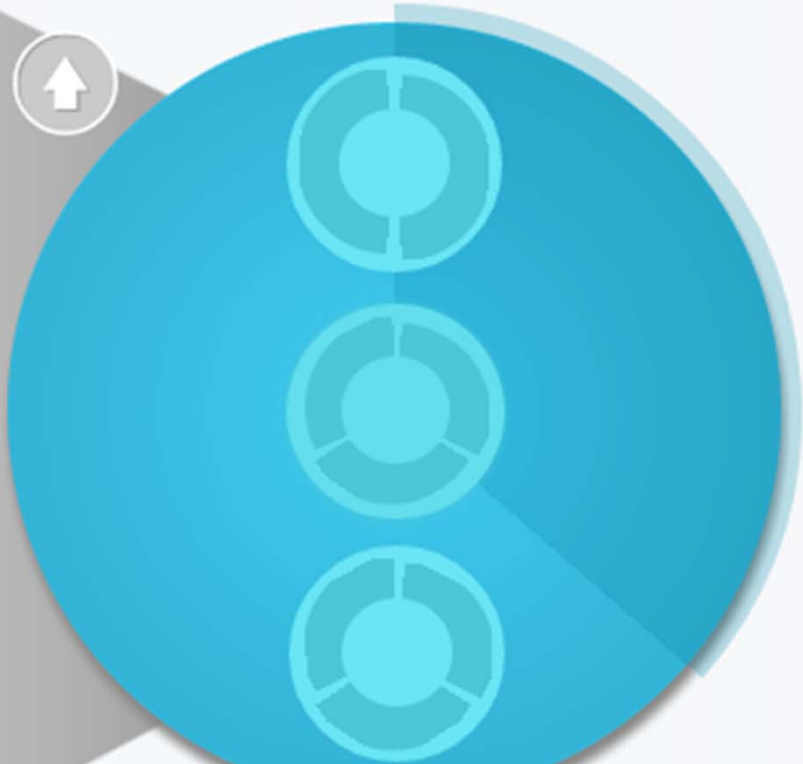

**Intercultural Communications**

L2. Identify key concepts and theories in intercultural communication

---

**Contemporary Issues**

L3. Engage in intelligent, rational discussion about contemporary issues concerning immigration and distribution of wealth





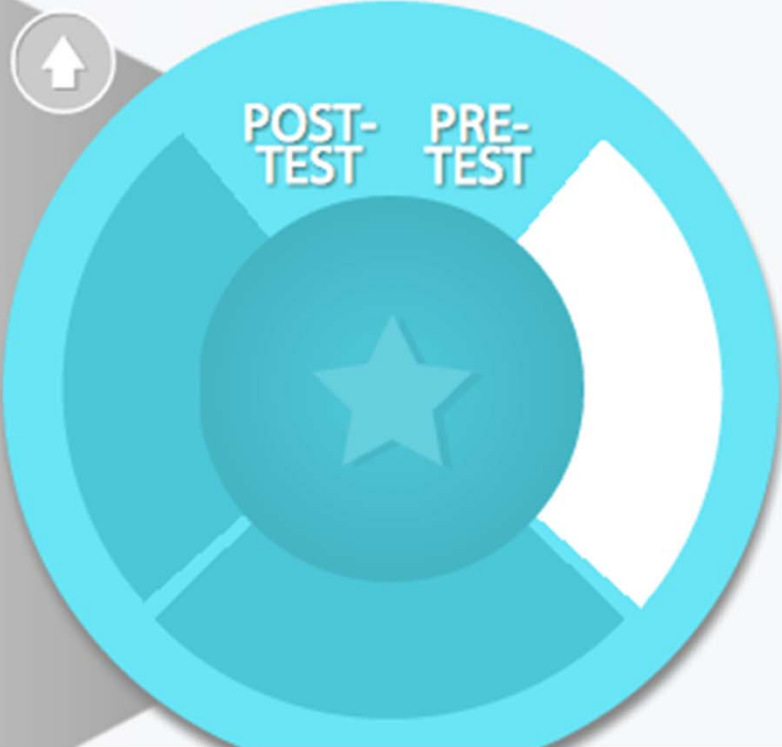
# Assessment-Level View

and distribution of wealth

Transcript Tracker

Topics in this Lesson

- ☐ **Contemporary Issues Pre test**  
L3. Engage in intelligent, rational discussion about contemporary issues concerning immigration and distribution of wealth
- Analyzing Non-Verbal Communication**  
T1. Compare/Contrast verbal and non-verbal communication modes and assess Dr. Strangelove
- Verbal And Non-Verbal Communication**  
T2. Discuss the importance of verbal and non-verbal communication modes and apply to 2 different cultural



# Transcript View from Dashboard

## Applying Ethics & Morality

L1. Use a social theorist to describe "ethics" and "morality" in multiple applications

**Enroll**   Lesson Map

**Transcript Tracker**

NAU Courses related to this Lesson

<b>CCSU251</b>	0.45 Credits	<input type="checkbox"/>
<b>HUMA381</b>	0.60 Credits	<input type="checkbox"/>
<b>RELI151</b>	0.45 Credits	<input type="checkbox"/>
<b>SOCI202</b>	0.45 Credits	<input type="checkbox"/>

☐ Not Started   ☒ In Progress   ☐ Completed   ☐ Transferred

ARHI143	<input type="checkbox"/>
CCSU251	<input type="checkbox"/>
CCSU351W	<input type="checkbox"/>
CCSU490C	<input type="checkbox"/>
COMU302	<input checked="" type="checkbox"/>
CSTU272	<input type="checkbox"/>
CSTU324	<input type="checkbox"/>
CSTU366	<input checked="" type="checkbox"/>
ENGL106	<input checked="" type="checkbox"/>
ENGL254	<input type="checkbox"/>

### Lesson

**Illustrations Of Human Nature**  
L1. Discuss a personal statement of the importance of literature, film, and art in understanding human nature

### TO DO'S

👍 You have no To Do Items

### HOLDS

👍 You have no Hold Items

Welcome to Personalize Learning's Student Orientation Tutorial (SOT)!

This SOT will show you how to... [read more](#)

#### PLS Scheduled Downtime

All Dziedzinski July 11, 2013


Hello,

On July 27<sup>th</sup>, 2013 Pearson Learning Studio will be down from the hours of 3am-6am

**Corrine Gordon**  
Mentor


📞 602/776-4655

# Dashboard and LMS Interface



[Return to PL Home](#)

**PROGRESS OVERVIEW**  
Lesson:  
**COMMON FALLACIES**

  
**46%**

**TASK LIST**

**CHAT WITH...**  
**ALL LEARNERS (163)**  
Everyone enrolled in PL  
**SCIENCE (52)**  
Others in this Milestone  
**COMPLEX THOUGHTS (37)**  
Others in this Competency  
**GOOD ARGUMENTS (14)**

**Course Home**  
Syllabus  
**Unit 1**  
Lecture  
Reading Assignment  
Chapter 3 Homework Problems  
Threaded Discussion  
Quiz  
**Unit 2**  
**Unit 3**  
**Unit 4**  
**Unit 5**  
**Unit 6**  
**Unit 7**  
**Unit 8**  
**Unit 9**  
**Unit 10**  
**Unit 11**  
**Unit 12**

**Course Home**

**Announcements**  
[Expand All](#)

Announcement	Submitter	Date/Time *
<a href="#">ClassLive Meeting Has Been Changed!</a>	Andrea Adams	9/30/2006 12:00 AM
Due to the upcoming holiday, I have posted your Unit 2's homework a week early. To find it, click on the "Doc Sharing" tab. There, you will find your article. Download and respond within two weeks for full credit.		
<a href="#">Unit 3 is Now Open</a>	Andrea Adams	9/30/2006 12:00 AM
I've now opened Unit 3 and posted your assignments. They are due into the DropBox by the end of the month.		

**What's New**  
[Expand All](#)

Sort By: **Item** | Student

<a href="#">Document Sharing</a>	<a href="#">Go</a>
Alvarado, Kendra	Postings: 1
French, Lane	Postings: 1
<a href="#">Dropbox: Chapter 3 Homework Problems</a>	<a href="#">Go</a>
Alvarado, Kendra	New Posting <input type="checkbox"/> Grade
French, Lane	New Posting <input type="checkbox"/> Grade
<a href="#">Journal</a>	<a href="#">Go</a>
McMorrow, Justin	Comments: 1
<a href="#">Unit 3 - Threaded Discussion</a>	<a href="#">Go</a>
French, Lane	Postings: 2 <input type="checkbox"/> Grade
Russel, Mark	Postings: 1 <input type="checkbox"/> Grade
<a href="#">Weblogography</a>	<a href="#">Go</a>
Russel, Mark	Postings: 1
<a href="#">Unit 4 - Assessment</a>	<a href="#">Go</a>

# Questions for the Speaker



Dr. Corrine Gordon  
Assistant Clinical Professor  
Personalized Learning  
Northern Arizona University  
PL Website: [NAU.edu/personalized](http://NAU.edu/personalized)  
[Cori.Gordon@nau.edu](mailto:Cori.Gordon@nau.edu)



NORTHERN  
ARIZONA  
UNIVERSITY

**Personalized Learning**



# NAU Resources and References

Bolkan, Joshua. "Northern Arizona U Launches Online Competency-Based Degree Programs." *Campus Technology*.

5/28/13. <http://campustechnology.com/articles/2013/05/28/northern-arizona-u-launches-online-competency-based-degree-programs.aspx>

Fain, Paul. "Competency-Based Transcripts." *Inside Higher Ed*. 8/8/13.

<http://www.insidehighered.com/news/2013/08/09/northern-arizona-universitys-new-competency-based-degrees-and-transcripts>

Hurst, Frederick. "Northern Arizona University's Personalized Learning.

*Educause Review Online*. 9/4/13. [http://www.educause.edu/ero/article/northern-arizona-universitys-personalized-learning?utm\\_source=Informz&utm\\_medium=Email+marketing&utm\\_campaign=EDUCAUSE](http://www.educause.edu/ero/article/northern-arizona-universitys-personalized-learning?utm_source=Informz&utm_medium=Email+marketing&utm_campaign=EDUCAUSE)

Personalized Learning Website: [nau.edu/personalized](http://nau.edu/personalized)

# Closing Comments

## Learn More

[www.PearsonOnlineLearning.com](http://www.PearsonOnlineLearning.com)

-

[www.PearsonLearningSolutions.com/Webinars](http://www.PearsonLearningSolutions.com/Webinars)

## Join the Conversation

**Twitter:** @PearsonLS

-

**Facebook:** [www.Facebook.com/PearsonLS](http://www.Facebook.com/PearsonLS)