

Accelerate the Transfer Process to Better Serve Students

BRAINWARE FOR TRANSCRIPTS WEBINAR

Stephanie Lavalley, Manager, Industry Product Management

Maggie Male, Solution Standards Consultant, Services Engineering

John Rokas, Manager, Higher Education Services

The Hyland logo is positioned in the bottom right corner of the slide. It consists of a square with a vertical color gradient from green at the top to teal at the bottom. The word "Hyland" is written in a white, serif font across the center of the square, with a registered trademark symbol (®) to the upper right of the 'd'.

Hyland®



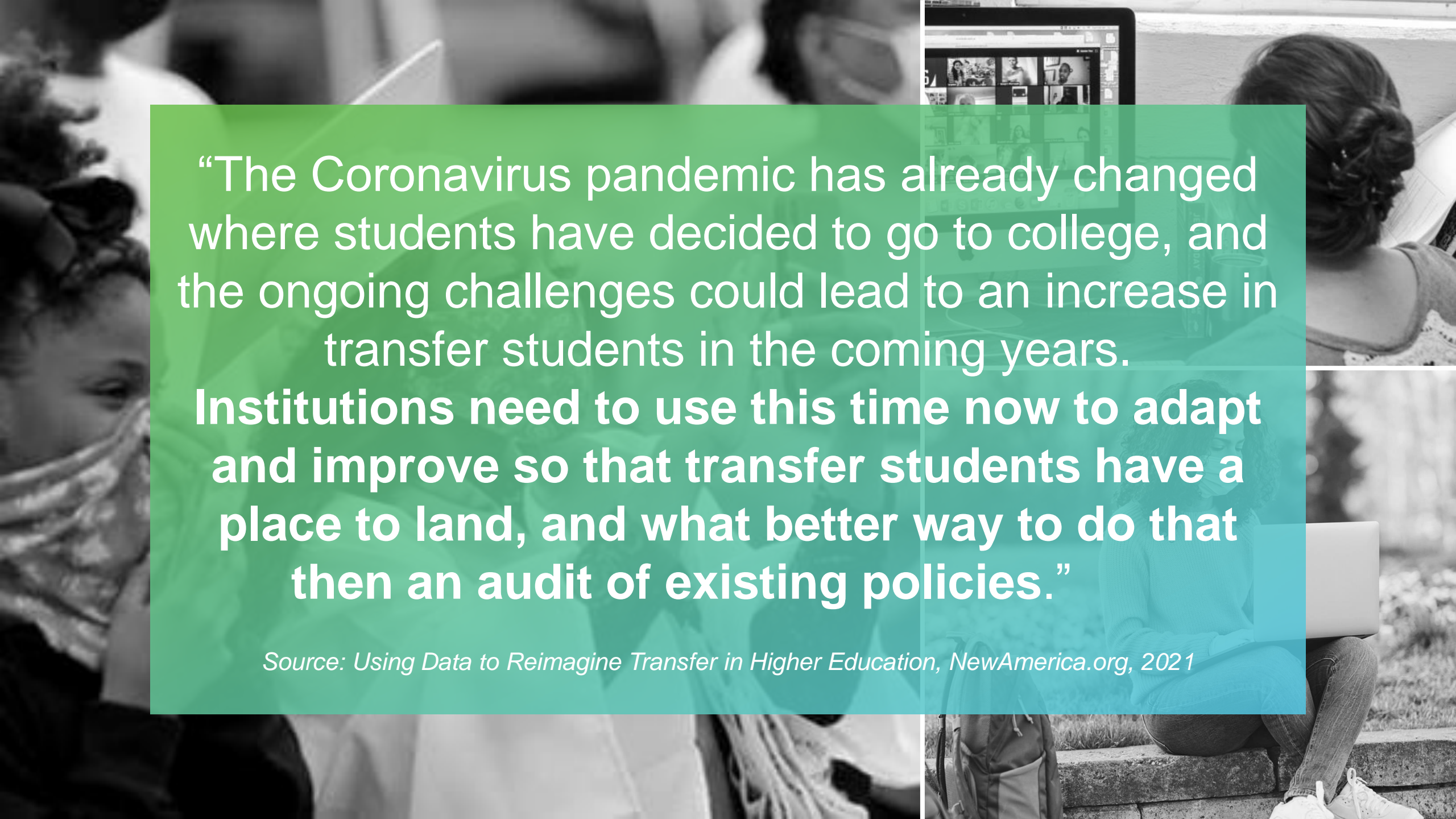
Hyland Brainware for Transcripts

Helping institutions reduce transcript capture and evaluation time and provide superior service for transfer college students.

Your institution can use technology to accelerate and enhance your admissions process, making you the best advocate for student success.

AGENDA

- Education in Today's World
- Manual Transfer Process
- Automate the Transfer Process
- Customers
- Q&A



“The Coronavirus pandemic has already changed where students have decided to go to college, and the ongoing challenges could lead to an increase in transfer students in the coming years.

Institutions need to use this time now to adapt and improve so that transfer students have a place to land, and what better way to do that than an audit of existing policies.”

Source: Using Data to Reimagine Transfer in Higher Education, NewAmerica.org, 2021

TECHNOLOGY GUIDANCE

"Leverage innovative technologies to facilitate the review of credit, to provide greater consistency across credit award determinations, and to increase the efficiency and timeliness of the process."

Technology can facilitate the transfer and credit award process by decreasing the time needed to make and communicate decisions about the transfer and award of credit. Automated processes can also provide greater consistency when credit is awarded and how it is applied to a student's program of study and can better arm students with more timely access to information to appeal decisions about a denial of credit or how it was applied.

REAL WORLD

A top-down view of a person with dark hair, wearing a blue shirt, sitting at a wooden desk. They are typing on a silver laptop. To the left of the laptop is an open notebook and a blue pen. To the right is a white smartphone and a white mug with a blue rim containing a yellow beverage. The background is a dark, textured wall.

How are universities handling
course equivalency today?

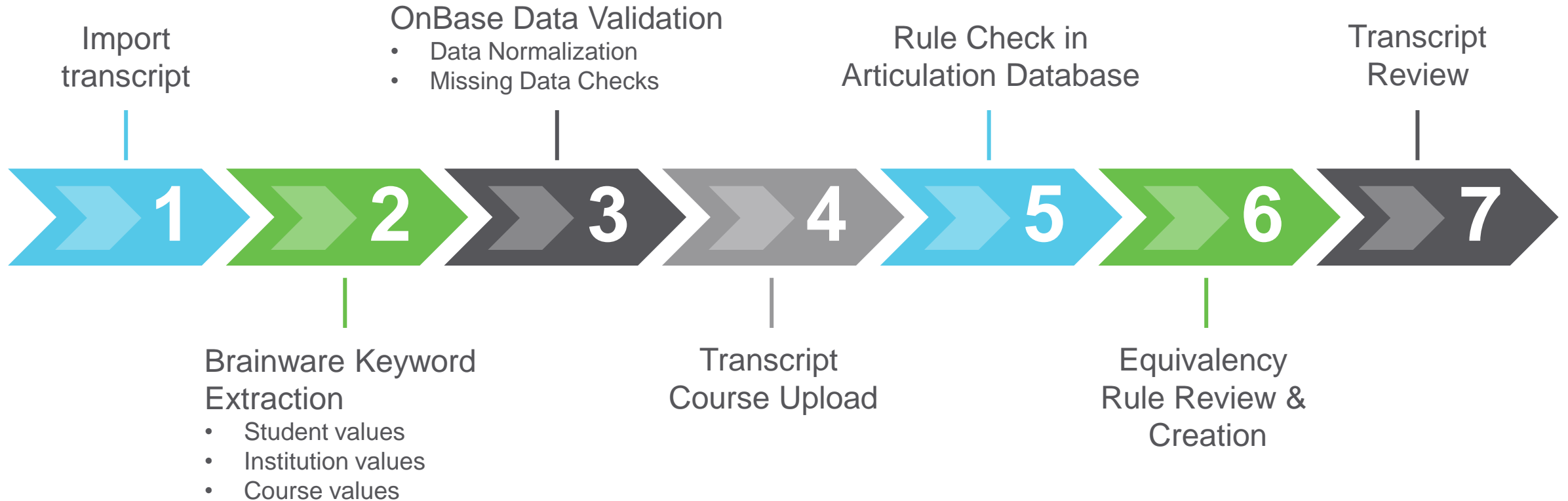
What improvements have they achieved by moving
to a more automated approach?



Manual Process **TODAY**

- So many transcripts, so many file formats
- So much data
 - Manual matching to students and institutions
 - Data entry errors
 - Data normalization
- So many articulation rules
- So little time

HYLAND TRANSFER COURSE EVALUATION



CAPTURING DOCUMENTS



With Brainware, admissions staff, advisors, and students are able to view the information much earlier, which assists with advising of incoming students and their course selection. Getting this information and our decisions back to students quickly is definitely a competitive advantage in securing and enrolling applicants faster.



Angela Schneider, Registrar California State University, East Bay

TRANSCRIPT CAPTURE



TRANSCRIPT CAPTURE DOCUMENT SEPARATION



TRANSCRIPT CAPTURE INDEXING



BrainwareTM
by Hyland

TRANSCRIPT CAPTURE INDEXING



OnBase®

OCR

Asdfasdf
Asdf
Safd
Alsdasd

Sdfasdfsdfasdfsdfsd
Asdfasdf

Transcript Capture:
Processes paper, TIFF, PDF, XML, and EDI transcripts
Paper transcripts are scanned and processed by OCR
EDI uses verified student data, changes as needed
Transcript information is sent to SIS via flat, EDI, or XML file

tsdf.asidkj
Asdfaskjfdias
As.dfkjaslkj
tsdf.asidkj
Asdfaskjfdias
As.dfkjaslkj
tsdf.asidkj
Asdfaskjfdias
As.dfkjaslkj
tsdf.asidkj
Asdfaskjfdias
As.dfkjaslkj
tsdf.asidkj
Asdfaskjfdias
As.dfkjaslkj
tsdf.asidkj
Asdfaskjfdias
As.dfkjaslkj

asdfsasidkjk
asdf
lkj
asdfsasidkjk
asdf
lkj
asdfsasidkjk
asdf
lkj
asdfsasidkjk
asdf
lkj
asdfsasidkjk
asdf
lkj
asdfsasidkjk
asdf
lkj
asdfsasidkjk
asdf
lkj

George	Washington	01/01/1994		
1284				
Fall 2010	BIO 101	Intro to Bio	A+	3.0
Fall 2010	ACCT 101	Basic Accounting	B	3.0
Fall 2010	ECON 103	Macro Economics	A	3.0
SPR 2011	ECON 104	Micro Economics	A	3.0
SPR 2011	BUSL 255	Business Law	B	3.0
Fall 2011	PHL 140	Ethics	W	3.0



TRANSCRIPT CAPTURE INDEXING



BrainwareTM
by Hyland



TRANSCRIPT CAPTURE PROCESSING

DOCUMENT PROCESSING EXCEPTIONS



1234

George

Washington

Fall 2010 ACCT 101

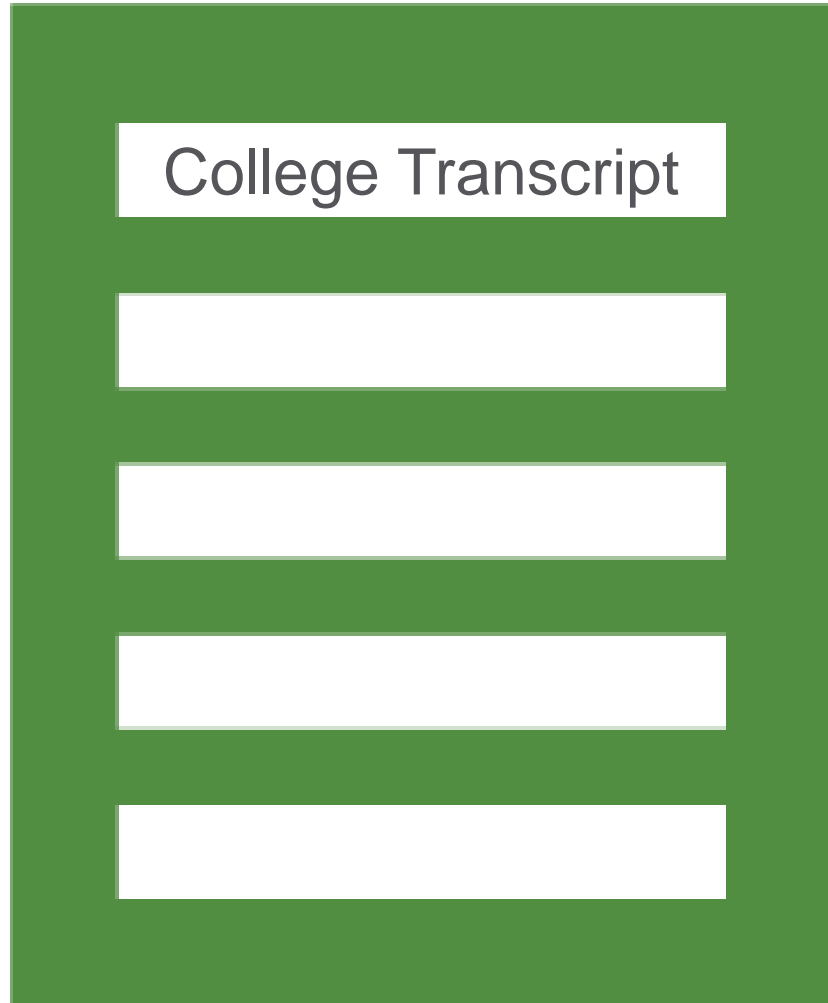
SPR 2011 ECON 104

DOCUMENT PROCESSING DATA VALIDATION

- ID, First Name, and Last Name must exist
- Ext Org ID must exist
- Course Info must exist
- Form Info must exist
- Remove Courses (Ws, etc.)
- Convert Course Values



DOCUMENT PROCESSING COURSE UPLOAD



0110100 0110100
1001101 1001101
0101001 0101001
0110100 0110100
1001101 1001101



Student Information System



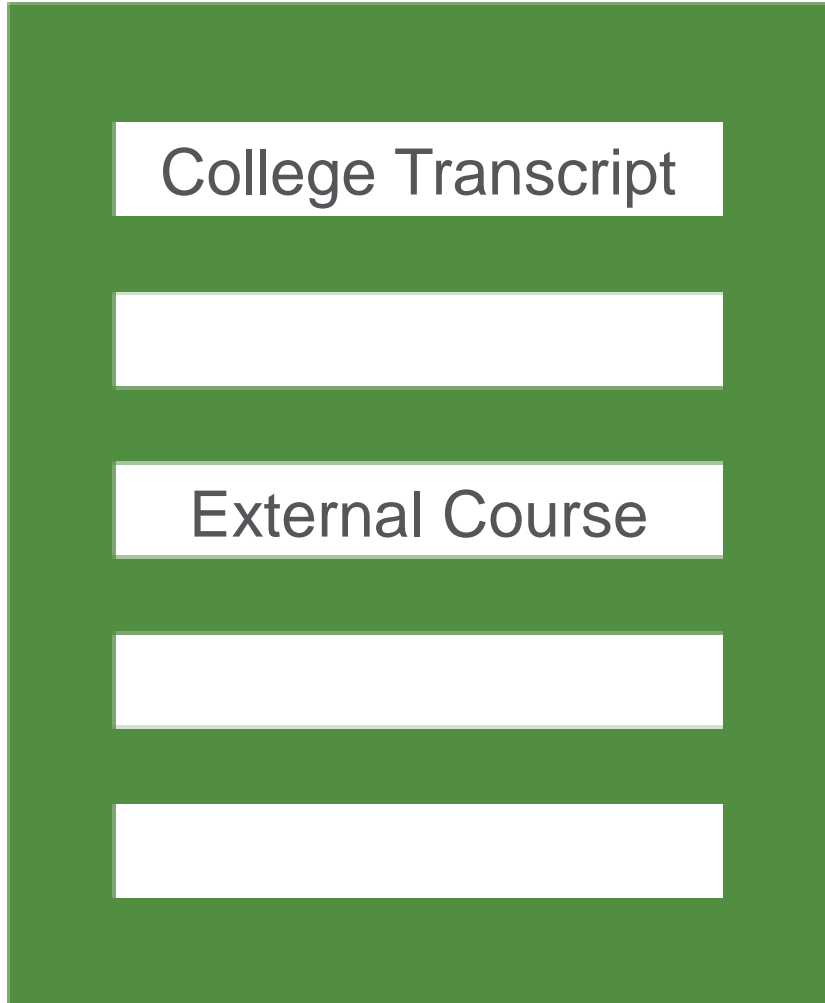
Brainware was the last electronic piece to getting all the needed information into the system without requiring any human interaction first. This allows staff to see anything they may want to know much faster.



Angela Schneider, Registrar California State University, East Bay

TRANSFER COURSE EVALUATION

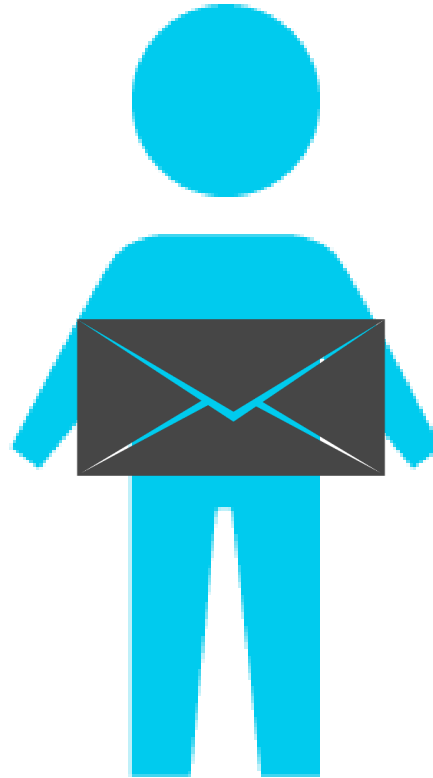
DOCUMENT PROCESSING RULE CHECK



Articulation
Database

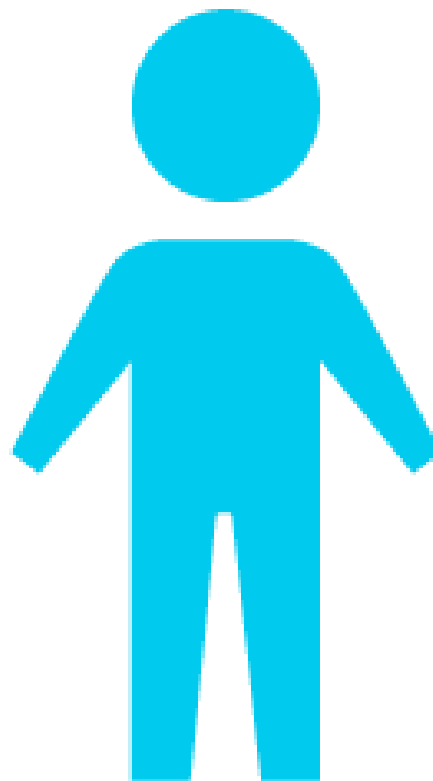
DOCUMENT PROCESSING RULE CHECK

OnBase®



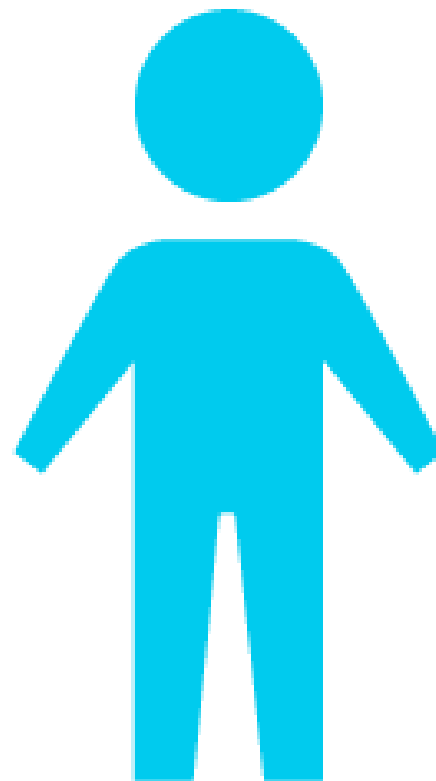
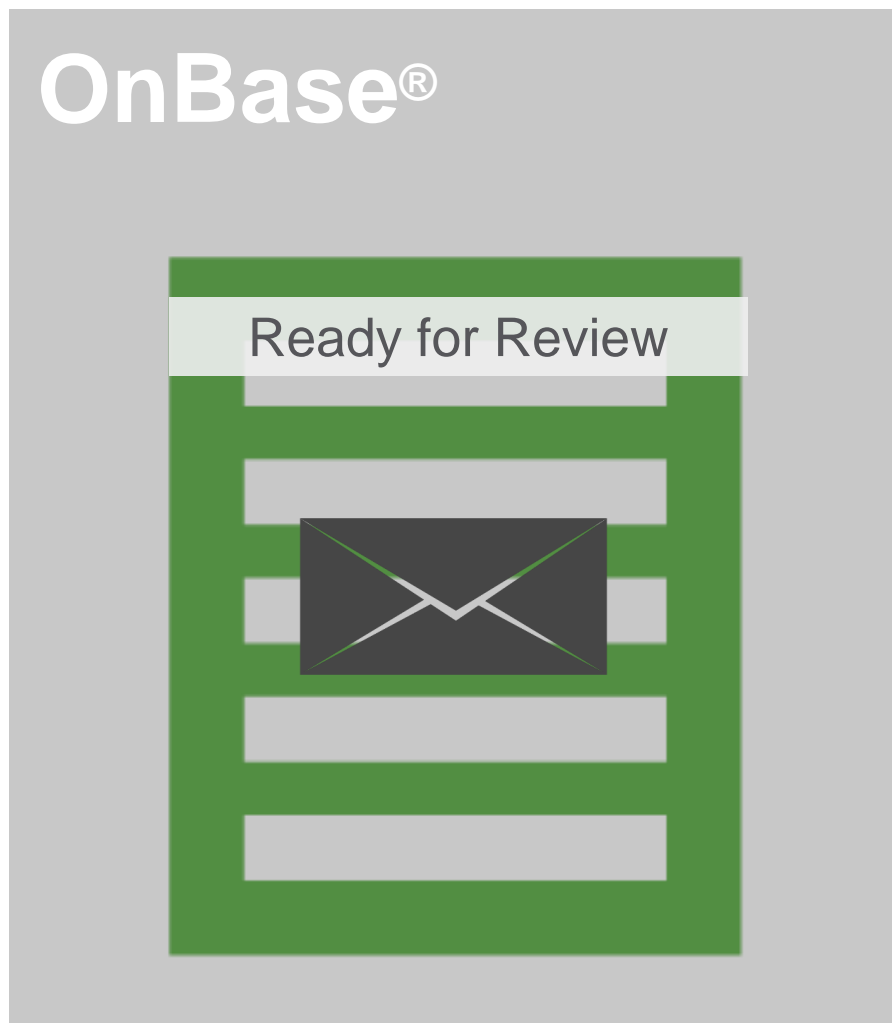
Articulation
Database

DOCUMENT PROCESSING RULE CREATE



Articulation
Database

DOCUMENT PROCESSING RULE CREATE





As we pick up speed and efficiency, we can expand transcript evaluation beyond those students who have applied, paid the fee and submitted a transcript. We can begin to evaluate applicants with incomplete files and proactively reach out with transfer credits results. This can only help us from a competitive standpoint.



Maria Drew, Assistant Director of Admissions, St. Petersburg College

Customers have been able to
DECREASE PROCESSING TIME
from **10 business days to 3-5 days**,
in some cases **24 hours**.





QUESTIONS & DISCUSSION

Use the chat below!

Hyland[®]

Reach out to learnmore@hyland.com or visit us at Hyland.com