



HOW AN AUTOMATED PROCESS MADE GOODWIN'S LMS MIGRATION A BREEZE

A Goodwin University & K16 Solutions Story

JUNE 14, 2022



OUR SPEAKERS



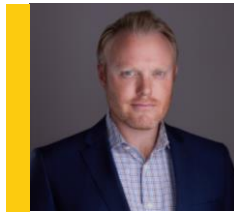
Lisa Coolidge-Manley

Director of Online Studies,
Goodwin University



Kathy Jensen

Senior Instructional Designer,
Goodwin University



STEVE MILDNER

Chief Revenue Officer,
K16 Solutions



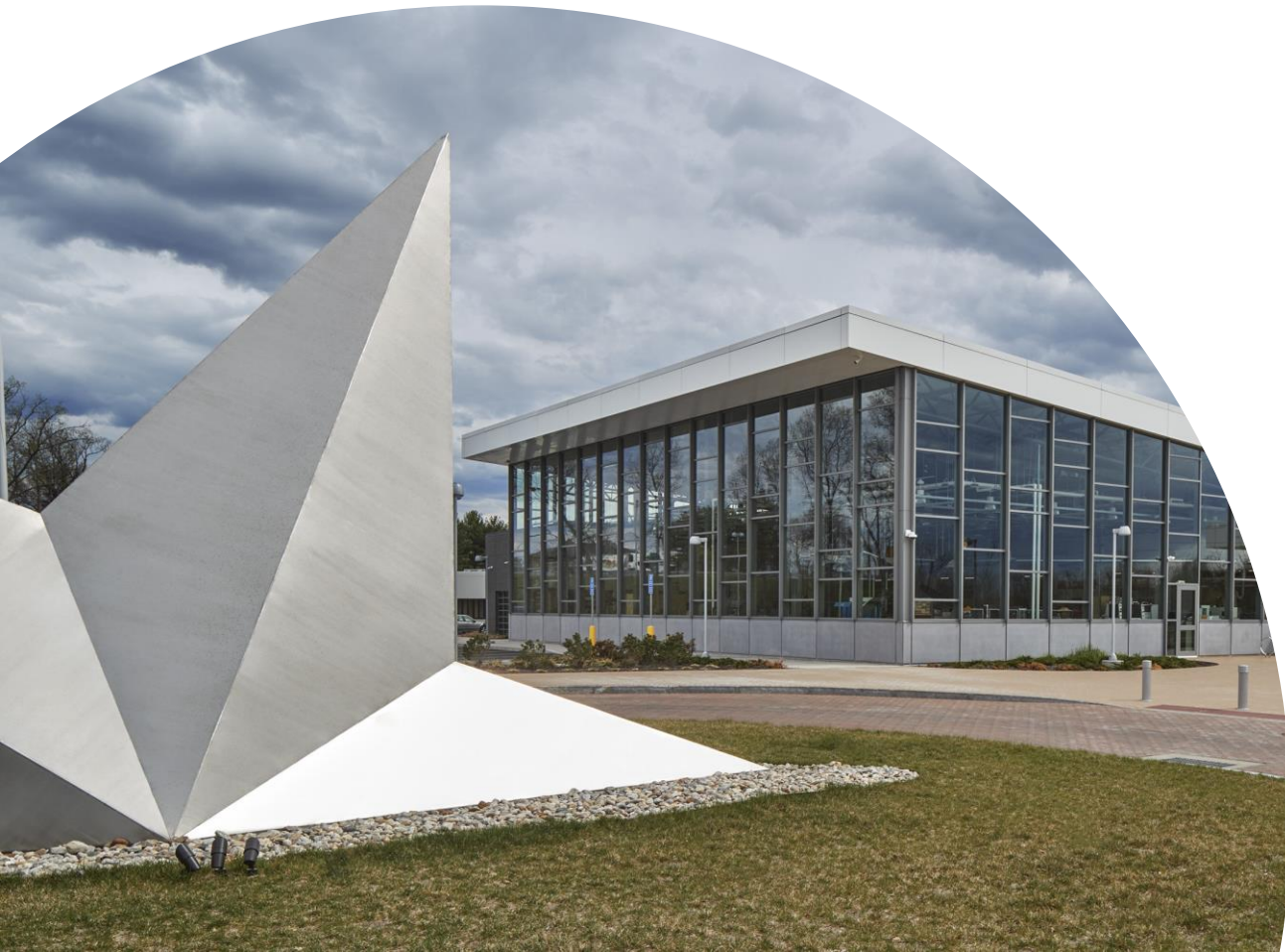
JOSH KIM, Ph.D.

Director of Online Learning at Dartmouth
College and Inside Higher Ed Contributor





Goodwin
University



-
- ✓ Goodwin Historical Information
 - ✓ Goodwin is a Non-Profit University with over 3300 students with average age 30
 - ✓ Goodwin within the past six years created *MasterCourse* shells for all courses in all disciplines
 - ✓ Pandemic challenges



Goodwin
University



**UNIVERSITY OF
BRIDGEPORT**



Acquisition of University of Bridgeport –
2020-2021



Evaluation systems to determine how to best
serve both populations

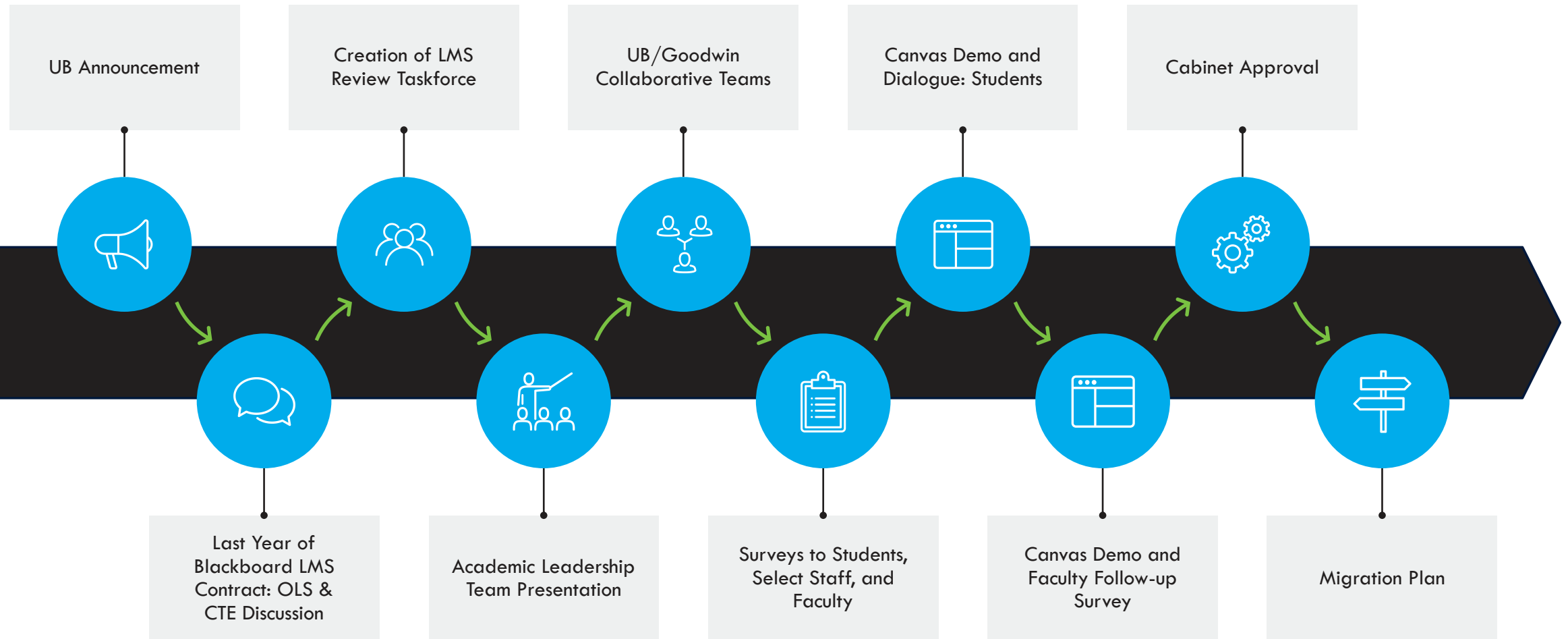


UNIVERSITY OF BRIDGEPORT



-
- ✓ University of Bridgeport is a Non-Profit University with over 3500 students with an average age of 20-21
 - ✓ University of Bridgeport has some Master Courses, but majority do not have them
 - ✓ Working on Consortium model so building MasterCourse shells for all programs – Timeline 2 Years.

LMS ROADMAP



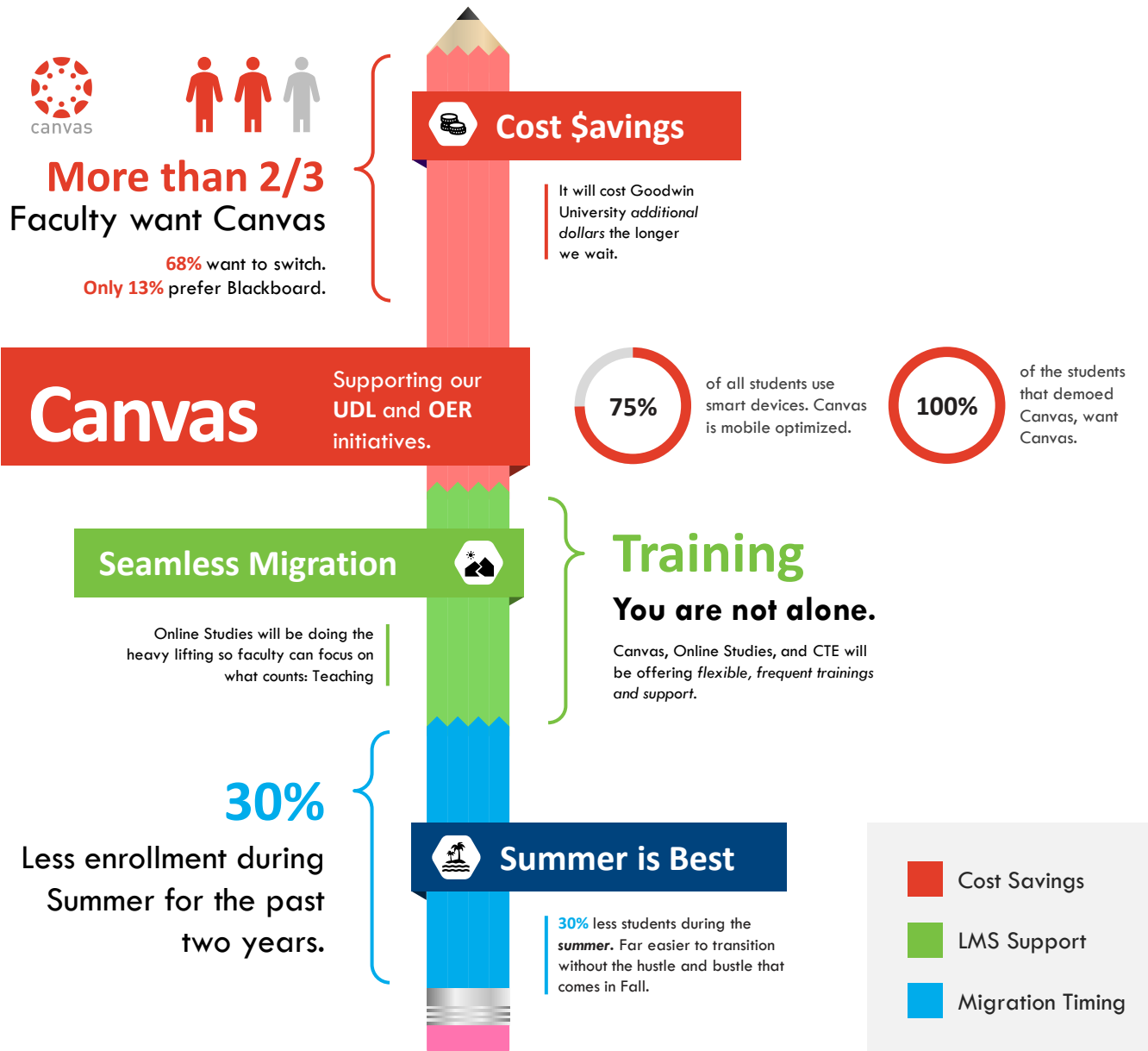
Data-Driven Decision Making

Data-driven decision-making.

*The faculty had very positive perceptions of Canvas. 35% of the surveyed faculty noted that the LMS has additional features that are useful to both faculty and students, finding the platform very interactive with more ways to effectively deliver material.

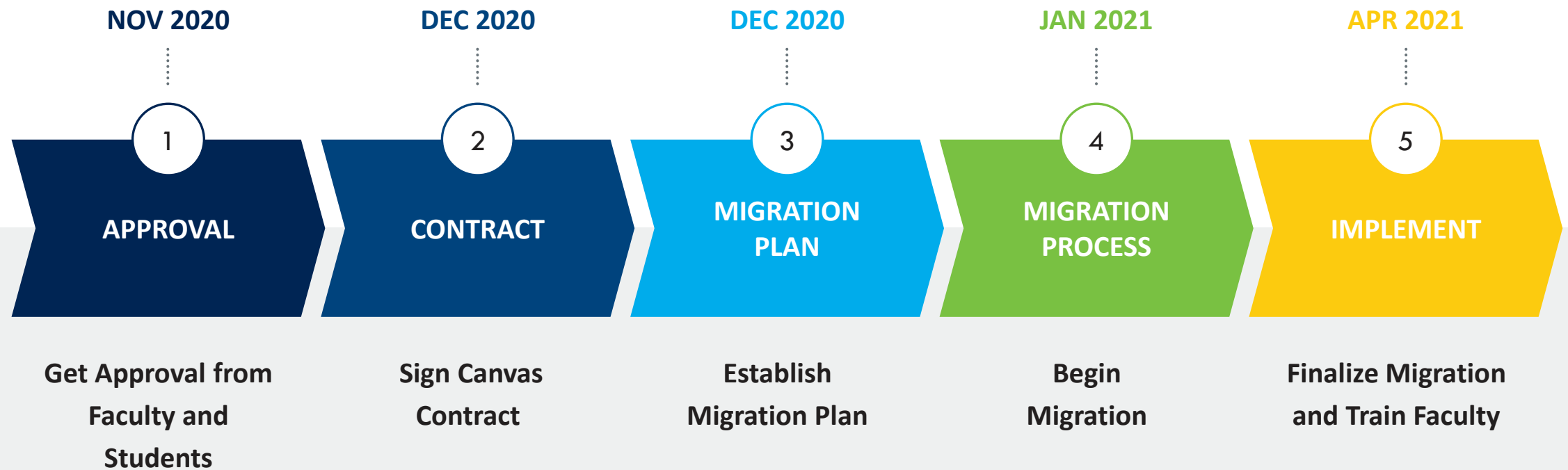
** Another 35% specifically noted that Canvas has a more user-friendly interface. Faculty noted that Canvas's "sleeker (*less clunky*)" look" would help students to navigate Canvas more easily and learn more effectively.

*** Surveyed faculty described Blackboard as "*confusing*". Faculty want more efficient media options such as recording, the ability to see more than two students at the same time, and an easier/faster way to create videos. Canvas Studio has all the requested features present in addition to built-in ADA video compliance tools.



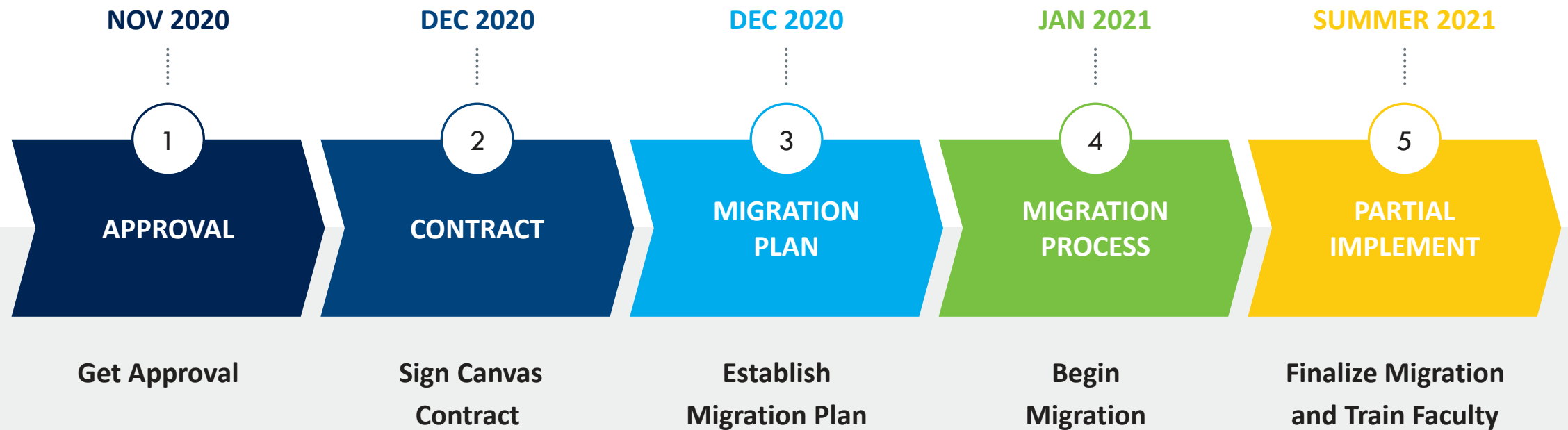
WHERE WE THOUGHT WE WOULD GO NEXT

ROLLOUT PLAN



WHERE WE WENT NEXT

ROLLOUT PLAN





K16 SOLUTIONS



Steve Mildner, CRO



ABOUT K16 SOLUTIONS



FOUNDED: 2018

Co-Founders worked in academia



OUR MISSION: TO SOLVE LMS PROBLEMS

Course migration, course archiving, content replacement



FIRST PRODUCT: SystemMigration

Then came DataArchiving and ContentReplace

WHAT IS SYSTEMMIGRATION

System Migration

INTEGRATED WITH ALL LMS PLATFORMS



D2L



Blackboard



moodle



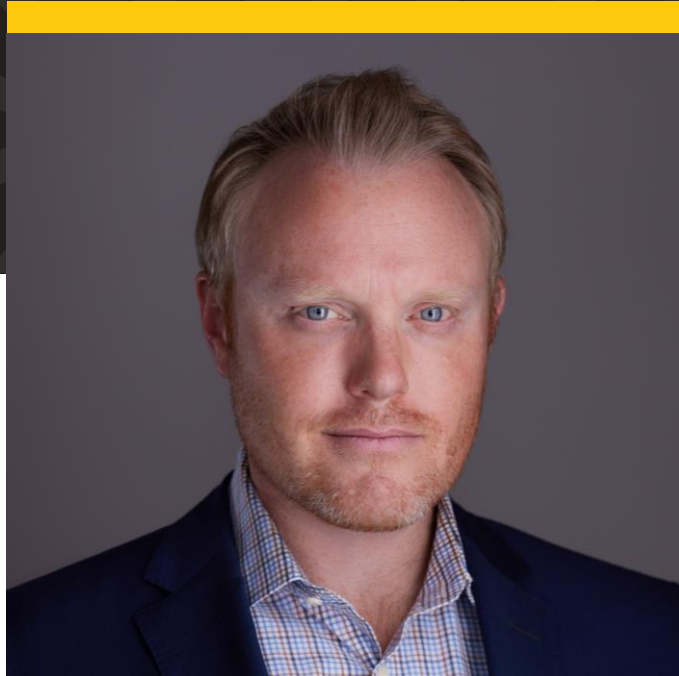
coursera

System Migration

is an automated content migration service that utilizes APIs and other proprietary methods to move your course content from one LMS to another while retaining your course structure, quizzes, tests, question pools, LTI's and other critical components

Changing your learning management system has
NEVER BEEN EASIER.

COMMON MIGRATION QUESTIONS



SOME SCHOOLS WE'VE HELPED



From Sakai &
Blackboard to Canvas



Moodle to Brightspace



Sakai to Canvas



Blackboard Original to
Ultra



Blackboard & Moodle to
Canvas



Blackboard Original to
Ultra



Brightspace to Canvas



Blackboard to Canvas



Moodle to Canvas



Blackboard Original to
Ultra



Yuja to Kaltura



Blackboard Original to
Ultra



**LESSONS LEARNED & ADVICE
FOR OTHERS**

1

Our bad. We still needed to edit the courses

- Template changes
- Missed telling K16 words to change

2

Courses

- Wrong courses to copy from instructors, Deans or Program Directors
- Clerical human errors

3

Training



QUESTIONS?

k16solutions.com