



TARRANT COUNTY COLLEGE MIGRATES TO NEW LMS WITH EASE AND ACCURACY

A Tarrant County College & K16
Solutions Story

DECEMBER 9, 2021



OUR SPEAKERS



Dr. Zarina Blankenbaker
President, Tarrant County College -
Northwest



Dr. Sha-Shonda Porter
Exec Director of Center for Teaching &
Learning at Tarrant County College



STEVE MILDNER
Chief Revenue Officer at
K16 Solutions



JOSH KIM, Ph.D.
Director of Online Learning at
Dartmouth College and Inside Higher
Ed Contributor



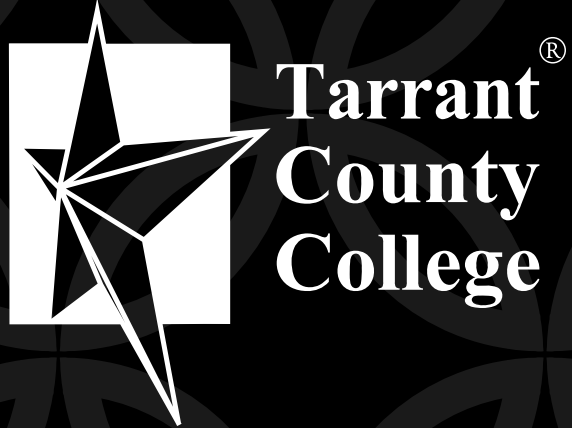


**Tarrant[®]
County
College**

TARRANT COUNTY COLLEGE



TCC TEAM



ABOUT TARRANT COUNTY COLLEGE



FOUNDED: 1965

TCC was established by a countywide election in July 1965 and South Campus opened in Fort Worth for student in Fall 1967.



INSTITUTION TYPE: TWO-YEAR COLLEGE

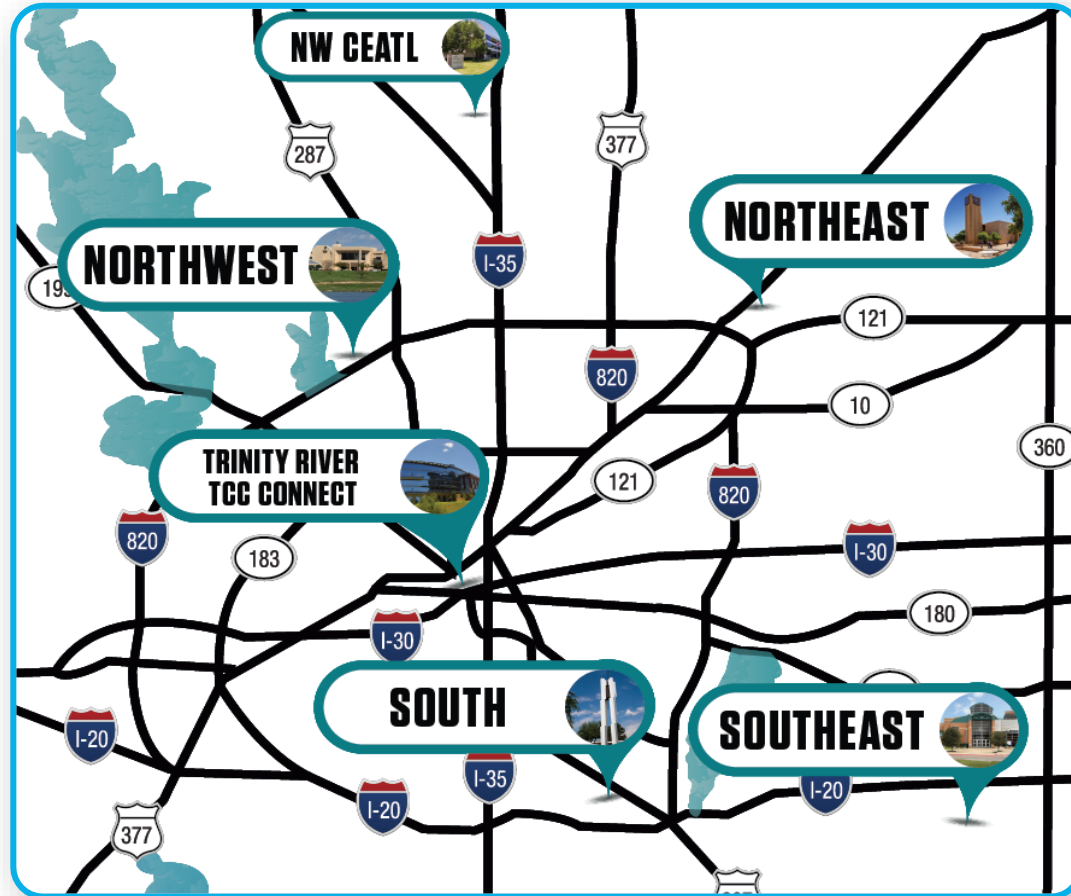
TCC has six campuses located in Fort Worth, Arlington, Hurst and online. Other sites include the TCC Opportunity Center, TCC Corporate Training Center Alliance Texas and several learning centers.



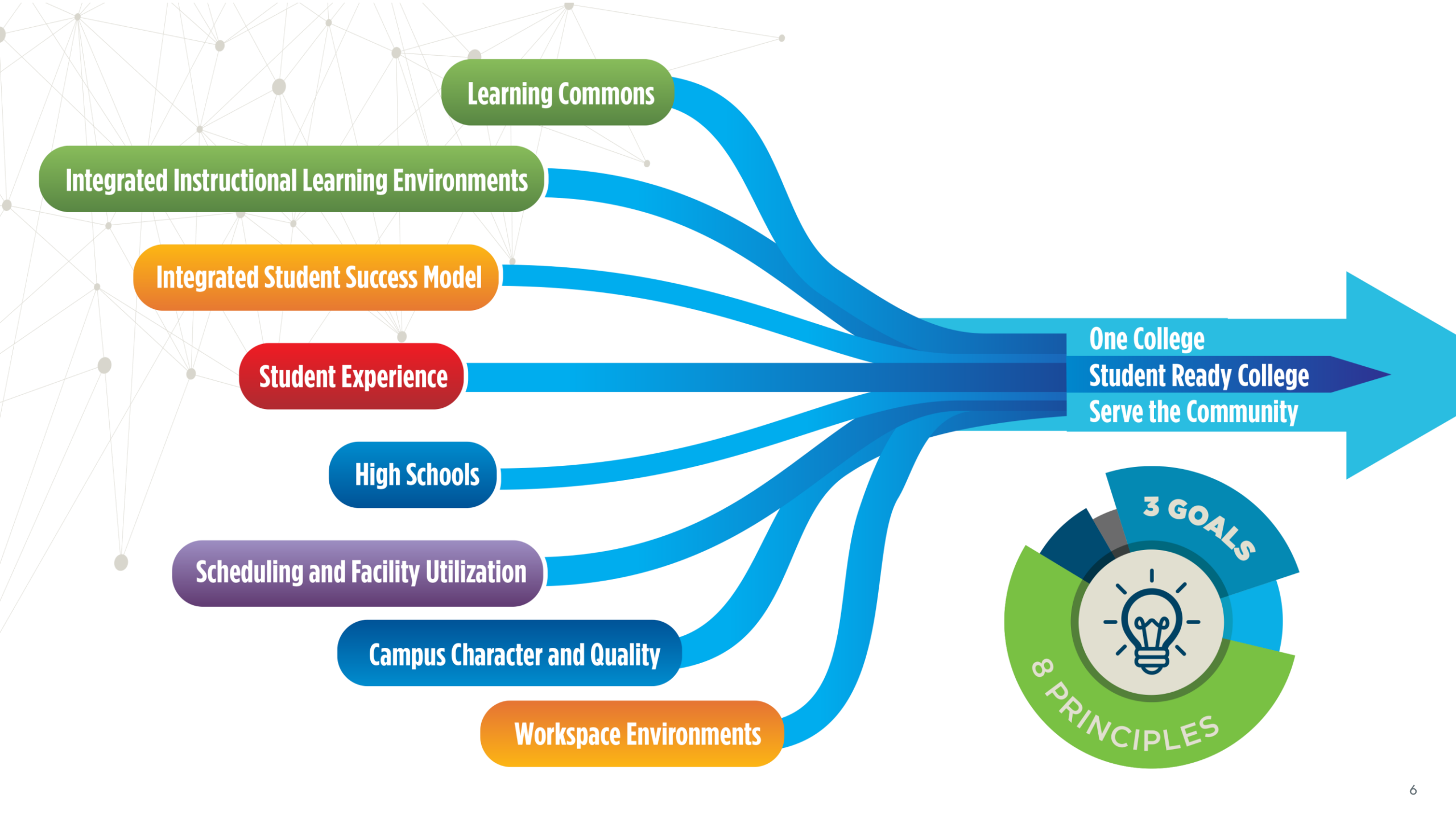
OUR MISSION: AFFORDABILITY & ACCESS

Our many educational initiatives help us stay true to our mission to provide affordable and open access to quality teaching and learning.

TARRANT COUNTY COLLEGE OVERVIEW



- Located in **North Texas**
- **Seventh-largest** institution in Texas
- **6 Campuses:** SO, NE, SE, NW, TR, CN
- **5** Physical Campuses and **1** Online Campus
- Serving over **100,000+** students
- **8,000 graduates** and growing
- **90%** of TCC graduates remain in the county
- **\$1.7B** economic impact
- Named **top 100 best places to work** in Texas by *Forbes* magazine



Learning Commons

Integrated Instructional Learning Environments

Integrated Student Success Model

Student Experience

High Schools

Scheduling and Facility Utilization

Campus Character and Quality

Workspace Environments

One College
Student Ready College
Serve the Community

3 GOALS

8 PRINCIPLES

RESPONDING TO AN INSTRUCTIONAL NEED

SPRING 2019



- **JCC Technology Committee** requests TCC adopt a new LMS
- Faculty on JCC committee recommend adoption of a new LMS
- Committee recommendation **accepted by Faculty Senate** and sent forward to Chancellor and Cabinet

FALL 2019



- IILE Technology Work Team **survey of transfer institutions** (UNT, UTA, Tarleton, TWU)
- **ADA and accessibility review** of current Blackboard LMS, as well as other leading LMS vendors conducted by Instructional Designers
- Development of **process to compile LMS functional criteria focused on student instruction needs**
- **Formation of IILE Technology LMS Focus Team** with IILE Advisory Panel endorsement of the charge

FOCUS TEAM PROCESS

JAN-MAR 2020



- Each meeting comprised of “workshop time” to complete line-by-line review compiled functional criteria, organization and categorization, addition of items, and removal of duplications
- Team members actively provided suggestions by email throughout the three-month period
- Also included suggestions from campus surveys, Principle Advisory Panel and ACT meetings, and staff

GATHERING CROSS CAMPUS FEEDBACK

- **To ensure we captured input across TCC, members were asked to:**
 - a) solicit feedback to gather criteria from their campuses, ACTs, and advisory panels
 - b) share the team’s discussions and draft components with those same stakeholders

LMS BENCHMARKING

OUR NEW LMS IS USED AT:

MOST TRANSFER INSTITUTIONS:

- UNT
- UT Arlington
- Tarleton
- TWU

MOST K12 PARTNER ISDs:

- Mansfield
- Arlington
- Keller
- HEB
- EMS

MANY SIMILAR INSTITUTIONS:

- Collin College
- Alamo Colleges District
- Houston Community College System
- North Central Texas College

BLACKBOARD IS USED AT:

SOME SIMILAR AND TRANSFER INSTITUTIONS:

- Dallas College
- Texas Wesleyan
- Austin Community College

D2L BRIGHTSPACE IS USED AT:

SOME SIMILAR INSTITUTIONS:

- Lone Star College System
- Blinn College
- McLennan Community College

OUR NEW LMS IS USED BY MOST SCHOOLS WHERE OUR STUDENTS COME FROM OR GO TO.

OUR NEW LMS IS ALSO USED AT OTHER TOP SCHOOLS IN TEXAS:

- UT Austin
- UT Tyler
- UT Permian Basin
- Texas A&M College Station
- Rice
- Baylor
- SMU
- Texas Woman's
- Texas State

FUNCTIONAL CRITERIA: MOST VITAL

EASE OF USE

- **Effective, easy-to-read text input** (text entry or pasted text stays formatted and ADA compliant)
- Universal common course cartridge support (**courses can be added to or from other LMSes**)
- **Ability to see whole course** in an outline view (all modules, items, assignments, in order)
- **Clear and easy navigation** within and between lessons. Students can get from one item to the next easily, moving through a lesson intuitively. Lesson items are grouped within lesson

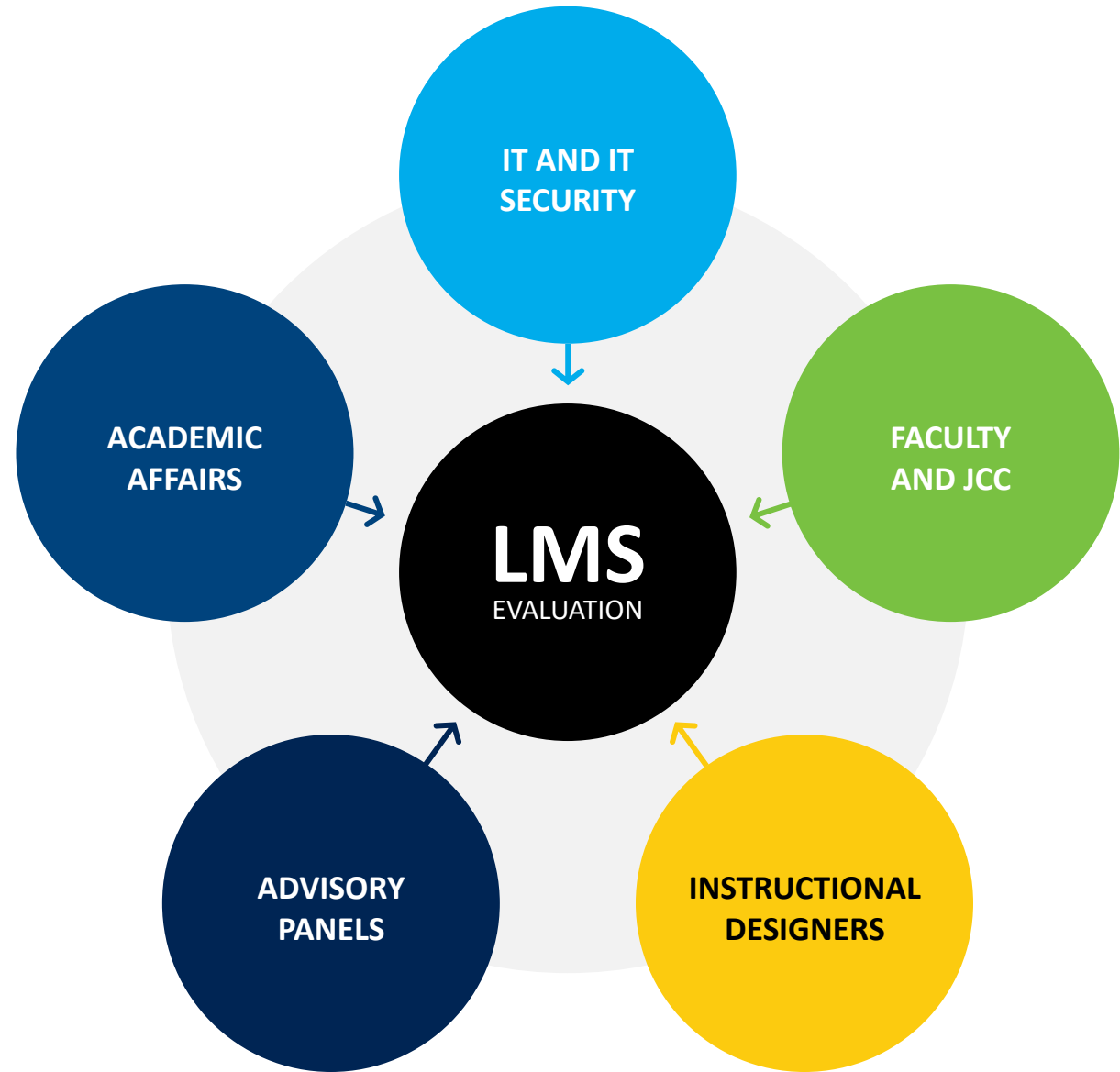
LESSON BUILDING

- **ADA features** (text entry, images, videos, design elements – faculty are guided to build course elements compliant with ADA)
- **Rubrics** (custom, can be copied between courses, can be shared with other users)
- Can add **inline links, media, LTI**
- **Clear, simple, easy-to-use, built-in system for organizing lesson content**
- **Variety of assessment types**, including tests, quizzes, discussion boards (threaded and unthreaded), surveys, essays

MOBILE FUNCTIONALITY

- **All users can access lessons, full gradebook, quizzes on all devices in a functional manner** (easy to read, navigate, and complete assignments)
- **Mobile app** (or mobile responsive browser application) allows **access for faculty** to gradebook, student information, in-LMS messaging, alerts, quizzes, assignments, etc.
- **Student mobile app includes a calendar, notifications (including announcements for all courses), and access to email / messaging**
- Ability to grade and interact with the gradebook on all devices

INFORMED DECISION MAKING



NEW LMS IMPLEMENTATION TIMELINE



<https://inside.tccd.edu/ctl/teaching-and-learning-resources/canvas/>

K16 SOLUTIONS & TCC PARTNERSHIP ON MIGRATION



6,000 Courses Migrated Total

- 1,000 courses were premium course migrations to ensure compatibility
- 5,000 remaining courses were bulk course migrations

What TCC got with K16 Solutions

- Content was accurately placed into new LMS (content mapping)
- After initial 1,000 courses, migration was extremely rapid and remained accurate
- Faculty & staff were very pleased with outcome



K16 SOLUTIONS



Steve Mildner, CRO



ABOUT K16 SOLUTIONS



FOUNDED: 2018

Co-Founders worked in academia



OUR MISSION: TO SOLVE LMS PROBLEMS

Course migration, course archiving, content replacement



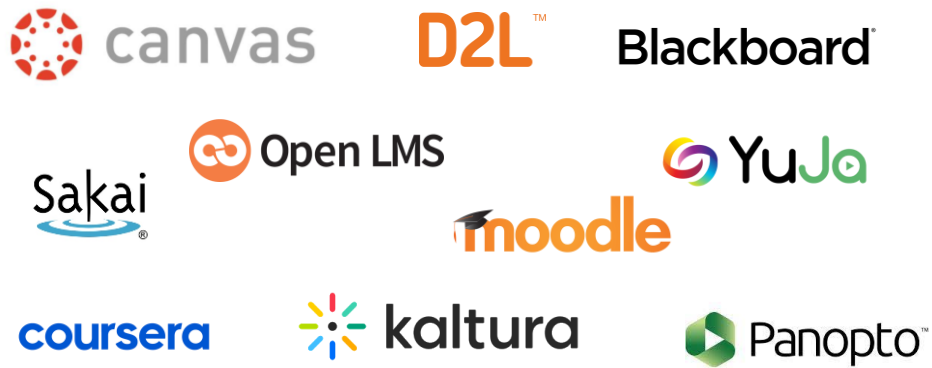
FIRST PRODUCT: SCAFFOLD

Migration / Archiving / Replacing

ABOUT OUR LMS MIGRATION



SUPPORTED LEARNING PLATFORMS



6,000+ COURSE TRANSFERS

Avg - Per week / Per institution

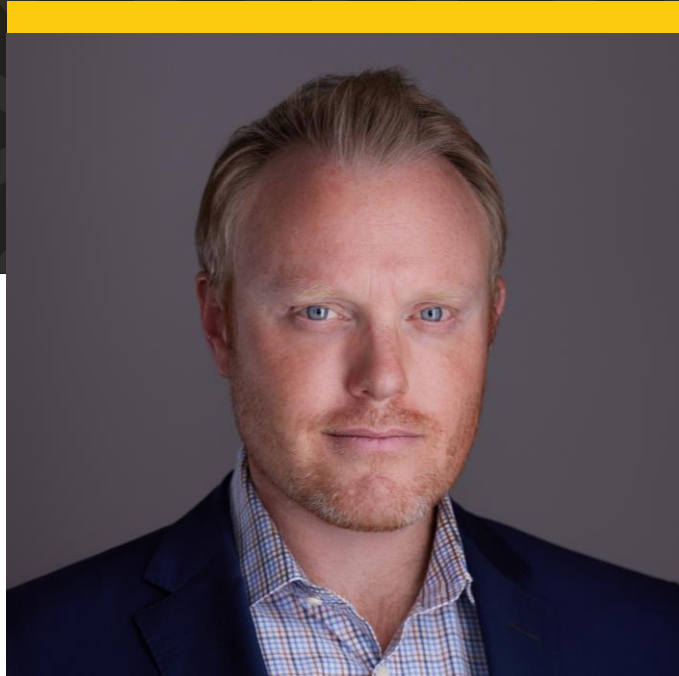
165,000+ VIDEO FILES

Transitioned from Kaltura to Panopto
in under one week

675,000+ COURSES

Processed over the last year

COMMON MIGRATION QUESTIONS



SOME SCHOOLS WE'VE HELPED



From Sakai &
Blackboard to Canvas



Moodle to Brightspace



Sakai to Canvas



Blackboard Original to
Ultra



Blackboard & Moodle to
Canvas



Blackboard Original to
Ultra



Brightspace to Canvas



Blackboard to Canvas



Moodle to Canvas



Blackboard Original to
Ultra



Yuja to Kaltura



Blackboard Original to
Ultra



**LESSONS LEARNED & ADVICE
FOR OTHERS**

1

Clearly define and articulate implementation roles and responsibilities

2

Maintain a “living” document to track decisions

3

Prepare for ongoing support and development

4

Create mechanism for continuous feedback on improvements for processes and protocols+

QUESTIONS?

scaffold@k16solutions.com

APPENDIX



3 GOALS and 8 PRINCIPLES

TARRANT COUNTY COLLEGE DISTRICT

By committing to the institution's 3 Goals and 8 Principles, TCC will function as One College, be Student Ready, and Serve the Community. These goals are the lens and the principles are the focus through which TCC employees approach their work every day.

OUR LENS

GOAL: ONE COLLEGE

TCC will function as One College to provide a consistent and successful student experience.

GOAL: STUDENT READY COLLEGE

TCC will put students at the core of all programs and services, so that they are welcomed, engaged, and supported inside and outside the classroom.

GOAL: SERVE THE COMMUNITY

TCC will serve the community and be its first choice for partnership.



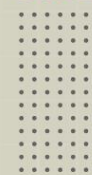
GOAL



ONE COLLEGE



GOAL



STUDENT READY COLLEGE



GOAL



SERVE THE COMMUNITY

OUR FOCUS



8 PRINCIPLES

Learning Commons

Learning Commons are an integrated component with the College-wide active learning experience and foster greater student engagement by meeting student needs in a dynamic and flexible environment. Libraries are undergoing physical and programmatic changes and are less about books and more about supporting learning activities.

Integrated Instructional / Learning Environments

The College embraces a culture of teaching and learning as the foundation of its mission, and supporting innovation in space, technology, and teaching practices serves as the core for student learning and success. To that end, the transformation of learning spaces beyond the traditional format to accommodate additional learning experiences such as experiential and active learning environments, helps better support the learning needs of students.

Integrated Student Success Model

The College dedicates significant resources focused on student success including faculty and staff, space, equipment, and technology. Successful integration of these resources is fundamental to the learning experience, so that the College is a welcoming environment for students that promotes learning.

Student Experience

A Student-Ready College provides an experience for students that is welcoming, simple to understand, provides a clear pathway, and breaks down barriers. Streamlined processes which are more student-centric ensure that students get through the door and on their desired pathway more quickly.

High Schools

Building and maintaining strong P-20 partnerships is essential for the student pathways to success. The dual enrollment (Early College High Schools) and dual credit partnerships with local ISDs support student transition to college.

Scheduling and Facility Utilization

A student-centered schedule of classes is offered and supports student access and success.

Campus Character and Quality

A Student-Ready College provides a welcoming and easily navigated experience for students and uses space effectively to maximize the student experience.

Workspace Environments

Redesigned workspace environment will promote more collegiality, enhance spatial quality, provide flexibility and increased efficiency, and support a culture of collaboration.

DEVELOPMENT OF LMS EXPERTISE

Focus Team Members Gained Broad Understanding of Needs and LMS Functionality

DEVELOPMENT OF DEMO COURSES

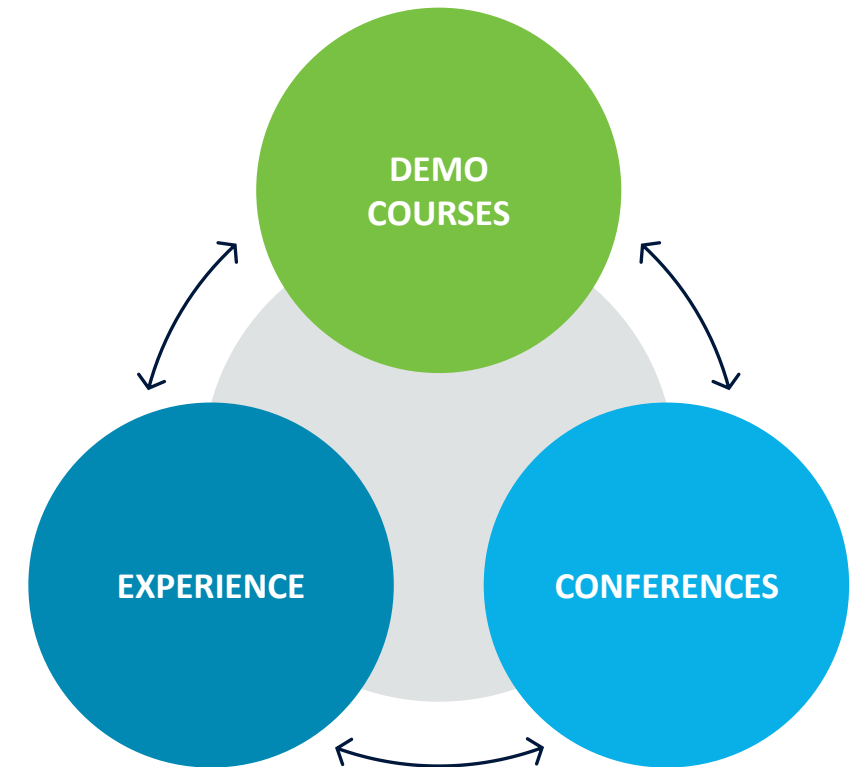


Blackboard®



These three vendors comprised more 85% of all 2018 higher education institution LMS adoptions

- ✓ Members have personal experience with LMSes
- ✓ Several team members attended national or local eLearning conferences or webinars related to use of LMSes, or process of selecting an LMS



FUNCTIONAL CRITERIA

CORE INSTRUCTIONAL TOOLS

INTEGRATION WITH OTHER SYSTEMS

- MyMathLab
- Turnitin.com
- Portfolio tool
- Colleague
- Google
- Remote proctoring
- Pearson
- Video platform

GRADEBOOK

- Grades can be weighted, unweighted, categorized
- Customize what grade columns are shown / hidden
- Grade by annotation, rubric, audio, video, comment, number grade
- Send customizable emails from within gradebook (for instance to non-submitters)

GROUPS

- Student group resources for interactive assignments – instructors can create groups, groups can discuss, share files, communicate

ANNOUNCEMENTS

- Instructors can post announcements that include audio, video, images, links, files, attachments
- Faculty can choose to make an announcement to one or multiple class sections

CALENDAR TOOLS

- Change date anywhere on an item and it changes everywhere
- Dates update to student and faculty calendars and to-do lists
- Option to see and update all dates at the same time (course outline view)

ATTENDANCE

- Take attendance in LMS
- Attendance information accessible by Financial Aid, advisors

INSTRUCTIONAL TOOLS

COLLABORATION

- Messaging within the LMS
- Built in tools for video conferencing, conference calls, remote office hours
- Students can easily find and communicated with classmates

ANALYTICS

- Information on how often students log in, time spent in class, how many assignments were submitted on time, late
- Student contact information and profile accessed by one click
- Dashboard to track student performance and attendance
- Course, discipline, and campus level reporting options
- Student retention information that can be shared with advisors

ASSESSMENT

- Use for assessments and outcomes measurement
- Rubrics can be connected to SLOs, and reports can be generated – faculty grading becomes SLO reporting

TUTORING

- Can create in-course links for students to access tutoring
- Writing Centers can create organizations, conferences, meetings
- Online tutoring (video / voice / annotation)

ONE-CLICK ACCESS

- Students can navigate to grades
- Students can navigate to calendar and/or to-do list
- Access to syllabus
- Faculty can turn on/off content
- Drag and drop within the course

SYSTEM TOOLS

LMS ADMINISTRATION

- Support for transition, including training and technical support, help with course conversion, training trainers, supporting faculty, etc.
- Training courses, guides, and resources for faculty and students already exist in LMS
- Custom user roles (examples: department chair, dean, SI, faculty observer, LMS support, etc.)
- Real-time Colleague updates and integration possible. Functionality can be turned on / off
- Reports can be run on faculty and/or student activity in courses

CUSTOMIZATION

- Grades can be weighted, unweighted, categorized
- Customize what grade columns are shown / hidden
- Grade by annotation, rubric, audio, video, comment, number grade
- Send customizable emails from within gradebook (for instance to non-submitters)

ORGANIZATIONS – FACULTY & STAFF

- Faculty groups (like ACTs, JCC committees, etc.) can create course-like spaces to share information and communicate
- Faculty can share assets, documents, and items with other faculty
- Training modules can be housed in LMS. Training for LMS already exists in LMS
- Librarians can create modules that can be easily integrated into courses as needed
- Groups and shared items are easy to find, add users to, copy and export from

ORGANIZATIONS – STUDENTS

- Groups like PTK can leverage LMS for organization management
- Those same tools available in courses, such as announcements, file sharing, modules, and discussions, are available for organizations

LMS EVALUATION

LMS RFP Review Scorecard				
Note: 0=no functionality / 1=partial functionality / 2=full functionality / 3=full functionality and easy to use				
Section	Criteria	Blackboard	D2L	Instructure
A Ease of Use				
A 1	Effective, easy-to-read text input (text entry or pasted text stays formatted and is ADA compliant)			
A 2	Universal common course cartridge support (courses can be added to or from any LMS)			
A 3	Faculty can send <i>customizable</i> emails from within gradebook (create and send customized emails to submitters, emails to non-submitters, etc.)			
A 4	From one screen, grade by annotation, rubric, audio, video			
A 5	Rich-text editing (creating text elements in LMS is similar to word processing)			
A 6	Modern, intuitive interface			
A 7	Options for audio or video feedback to students			
A 8	Final grades into Colleague seamlessly			
A 9	Ability to see whole course in an outline view (all modules, lessons, etc.)			
A 10	Readable font size and functional styles (header, etc.) for instructors can copy courses (from one section to another)			
A 11	Instructors can also copy individual elements or items (as course to another)			
A 12	Faculty can access student view of course			
A 13	Option to merge sections and/or create parent / child courses			
A 14	Clear and easy navigation within and between lessons. Students moving through a lesson intuitively. Items are grouped well. Videos for Lesson 1 are located within Lesson 1 and not in a separate area.			
A 15	Ways to share content, modules, lessons or whole course lessons (content can optionally be shared with instructors at other institutions)			
A 16	College-wide repository for content (faculty and staff can upload content to a central repository and easily import items to their own courses)			

Section	Criteria	Blackboard	D2L	Instructure
B Lesson Building				
B 1	Rubrics (customization, can be copied between courses, shared with other users)			
B 2	ADA features (text entry, images, videos, design elements – faculty are guided to build course elements compliant with ADA)			
B 3	Can add inline links, media, LTI			
B 4	HTML 5 editor			
B 5	Templates for designing items			
B 6	Clear, simple, easy-to-use, built-in system for organizing content			
B 7	Variety of assessment types, including tests, quizzes, discussions, essays			
B 8	Can create default settings for quiz or test items, so that items can be entered for each individual question.			
B 9	Possible to customize points-per-item in quizzes or tests to weight them all evenly with one setting			
B 10	In-LMS text easy to type, read, edit (fonts, spacing, headings, etc.)			
B 11	Change a date in one place, have it change everywhere (e.g. student to-do list, faculty to-do list for grading, calendars)			
B 12	Host videos, audio, images, and pdf files (option to link to external content)			
B 13	LMS/course)			
B 14	File directory easy to use, so that elements uploaded to platform are easy to find			
B 15	Discussion boards easy to create and customize (assign to sections, grade or numeric grade, etc.)			
B 16	Create discussion board assignment as graded, ungraded, or ungraded			
B 17	Create group discussions			

Section	Criteria	Blackboard	D2L	Instructure
C Mobile Functionality				
C 1	All mobile apps, mobile-responsive websites, and mobile notifications are fully accessible and fully ADA compliant (can be used with screen readers, display captions, etc.)			
C 2	Student mobile app includes a calendar (with dates for all courses), push notifications (including announcements for all courses), and access to email / messaging. Students should be able to opt in to receive reminders or push notifications from this app, and click on assignment links in calendar to allow them to work on assignments (launching the assignments either in the app or in a mobile responsive browser)			
C 3	Students can create, upload, watch, and download videos in the LMS / mobile app using a tablet or phone			
C 4	Mobile app (or mobile responsive browser application) allows access for faculty to gradebook, student information, in-LMS messaging, alerts, quizzes, assignments, etc.			
C 5	Ability to access lessons, full gradebook, quizzes on all devices in a functional manner (easy to read, navigate, and complete assignments)			
C 6	Ability to grade on all devices			
C 7	Ability to interact with the gradebook on mobile screens			
C 8	In-LMS web conferencing tools that work on all devices			
C 9	Students can decide how / when to receive messages and notifications			
C 10	Faculty can create, upload, and manage videos in the LMS / mobile app using a tablet or phone.			
C 11	In-LMS communication tools			
C 12	Access to all gradebook columns on iOS devices			
Mobile Functionality Total		0	0	0
Section	Criteria	Blackboard	D2L	Instructure
D Integration				
D 1	Proctorio (and other remote proctoring / secure testing services and vendors)			
D 2	Colleague (and other ERP)			
D 3	Google (Docs, Slides, etc.)			
D 4	Microsoft (Office and Teams)			
Turnitin (grades transfer to gradebook – students can click link in LMS that allows them to directly submit				

LMS Selection: Proposed EPMO Schedule

